

# LAND PUBLIC TRANSPORTATION and the ***FUTURE ASIAN CITY*** (in 4 chapters)



by  
**David Mizan Hashim**

**VERITAS**

# THE STORY

Chapter 1: the Evolution of Cities

Chapter 2: the Solutions

Chapter 3: the Experiments

Chapter 4: Visions of the Future

# THE STORY

## Chapter 1: the Evolution of Cities

*The physical character of ancient cities of the world evolved over centuries in rhythm with the evolution of transportation technology, and continue to evolve today as these technologies advance*



[illegible]

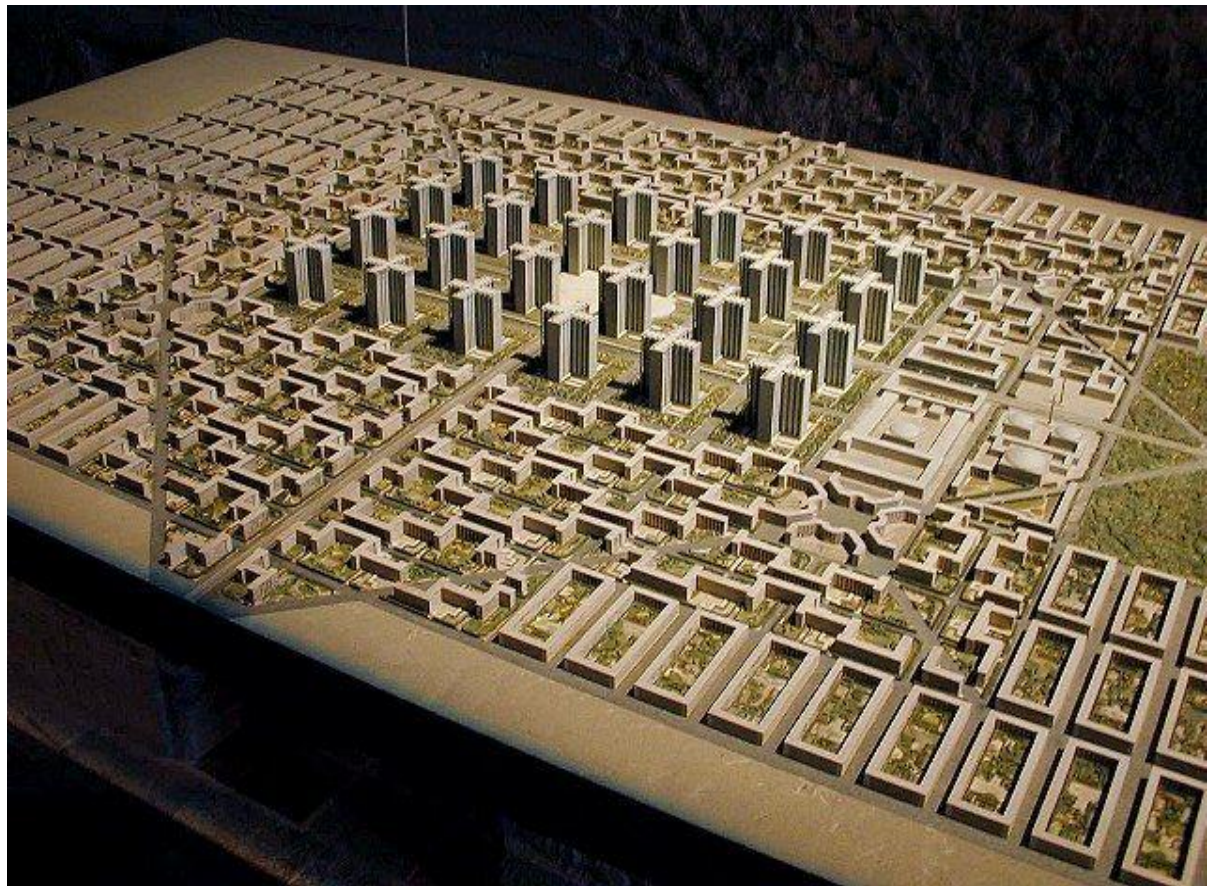
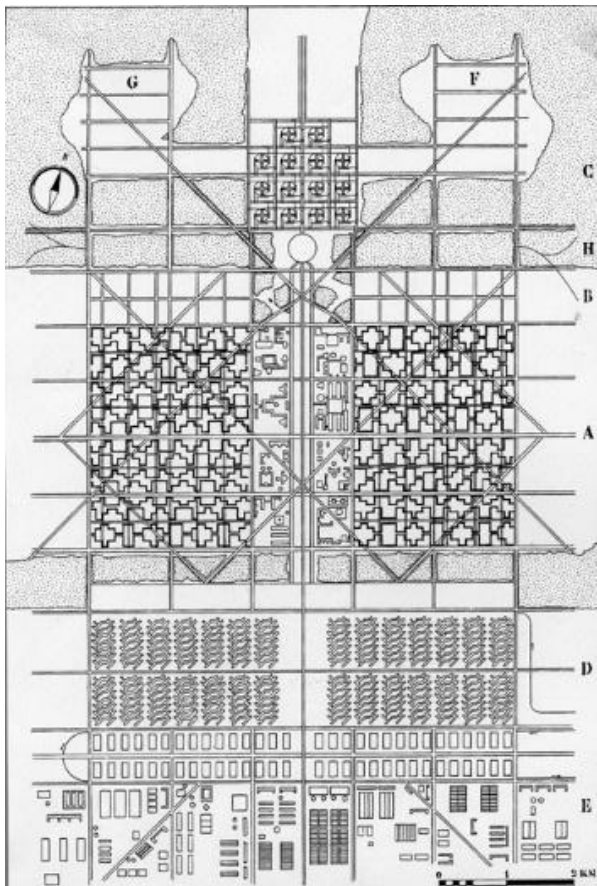








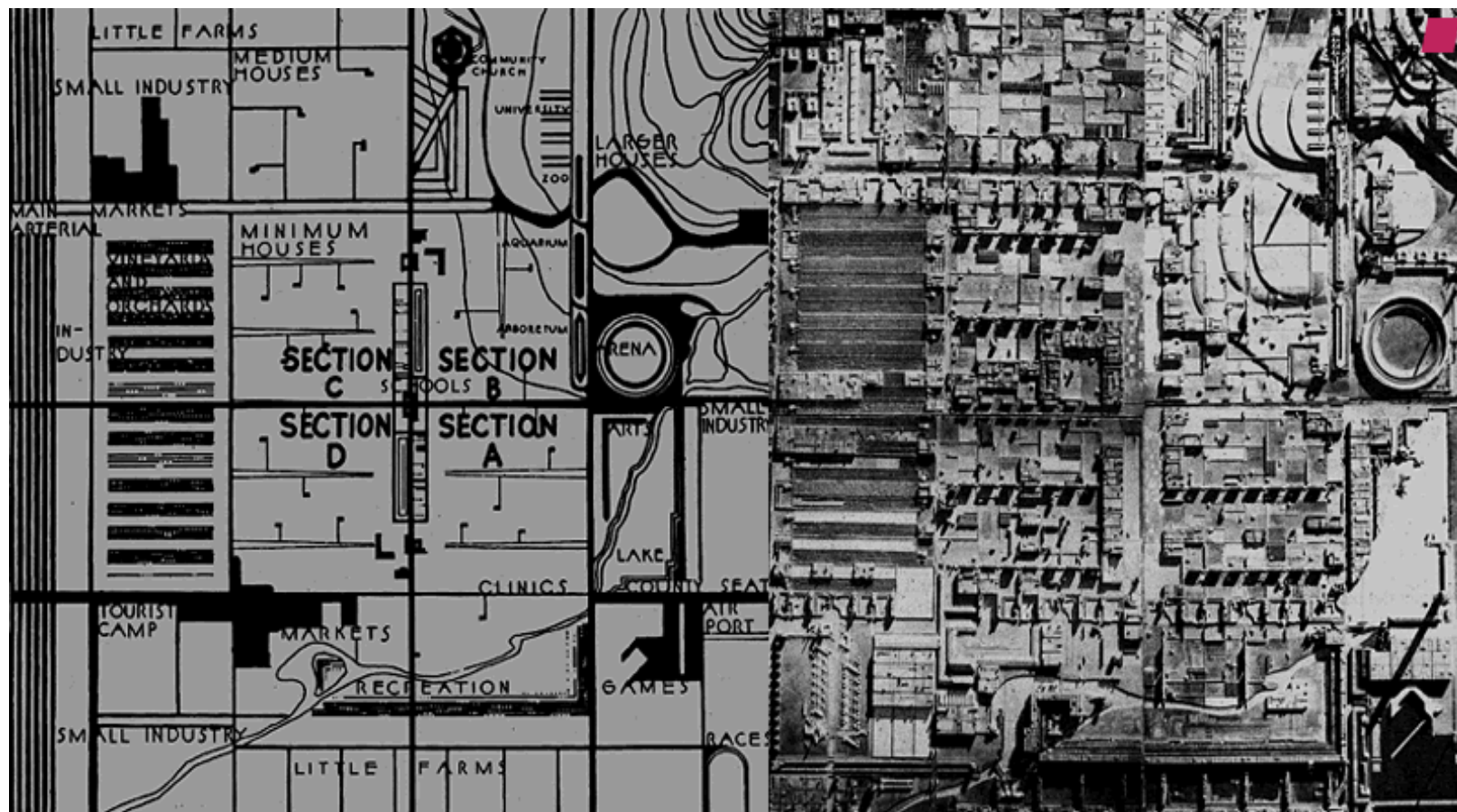




Villa Radiuse, 1920's







Broadacre City,  
1940's





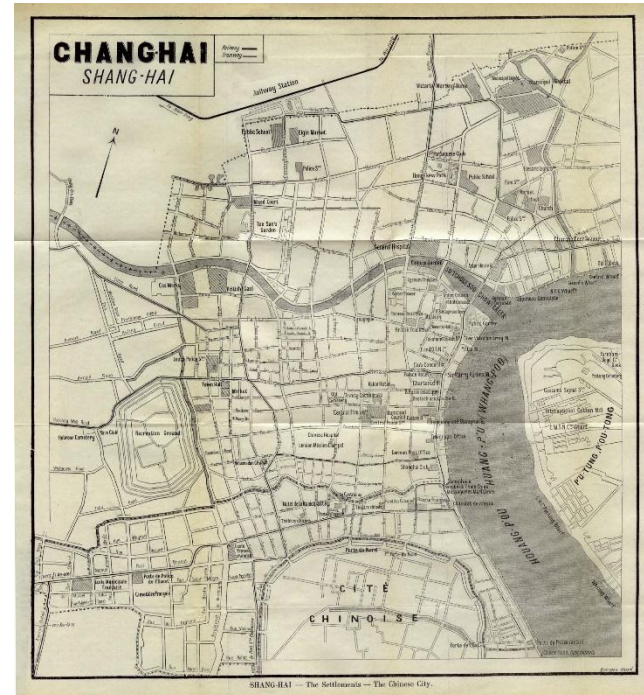
Metabolist City,  
1960's







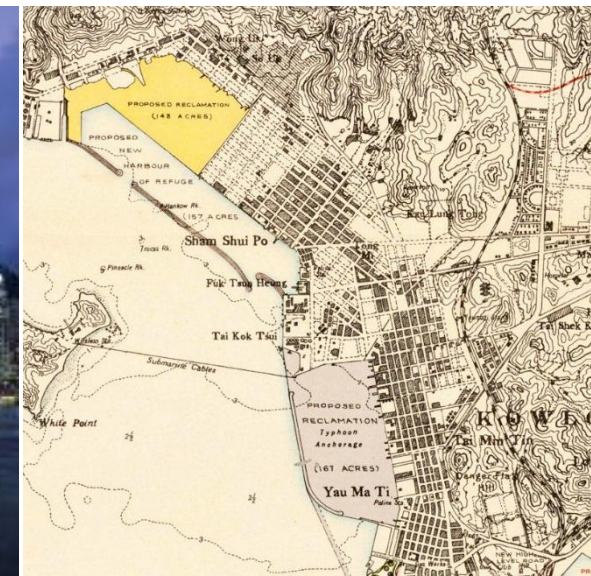
Shanghai







Hong Kong







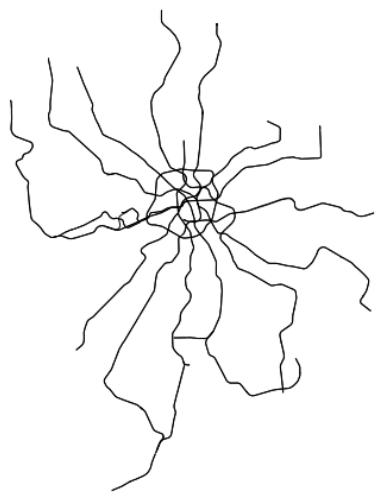
Singapore











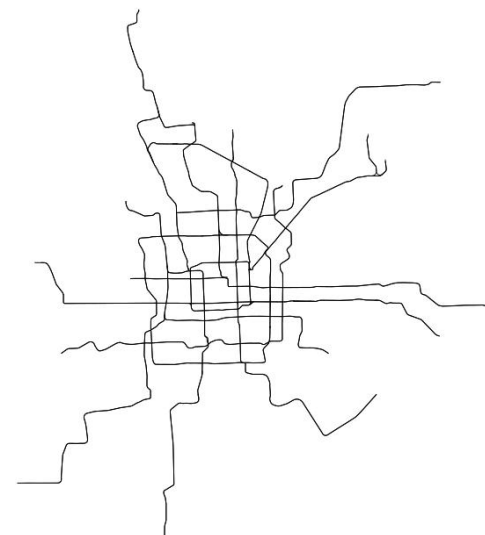
MOSCOW



NEW YORK CITY



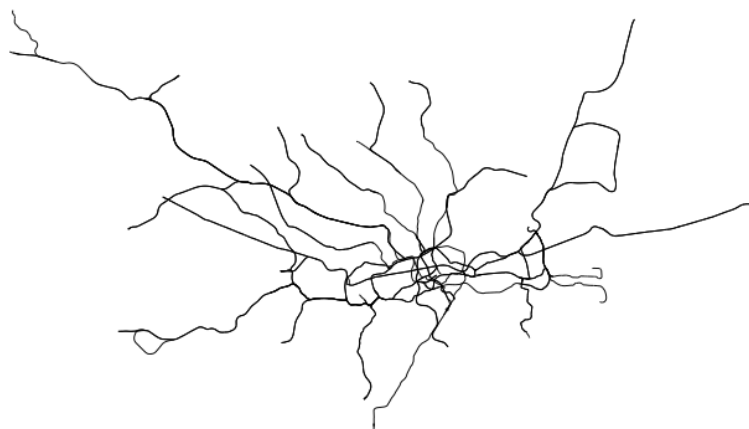
HONG KONG



BEIJING



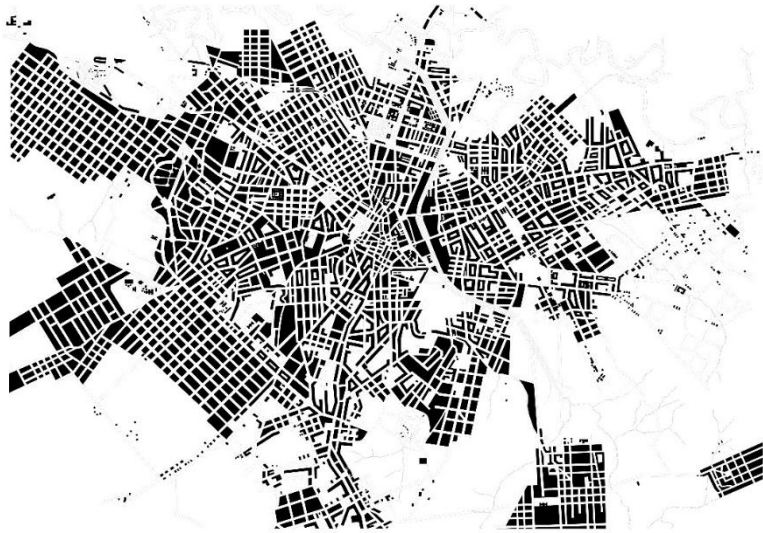
PARIS



LONDON



SINGAPORE



Sao Paulo



Washington DC



Vienna



New York City



# Venice



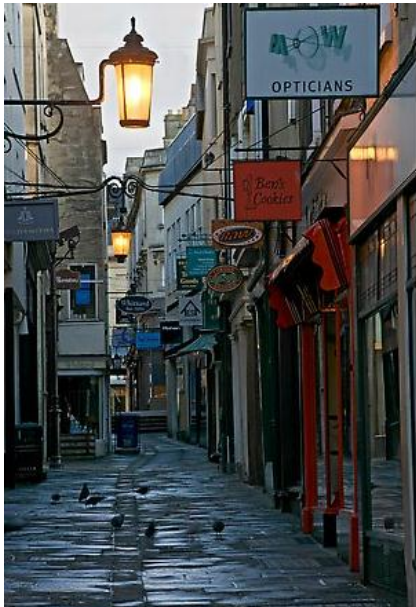




Old Dubai



New Dubai



Old Paris



New Paris



# The Future Green City

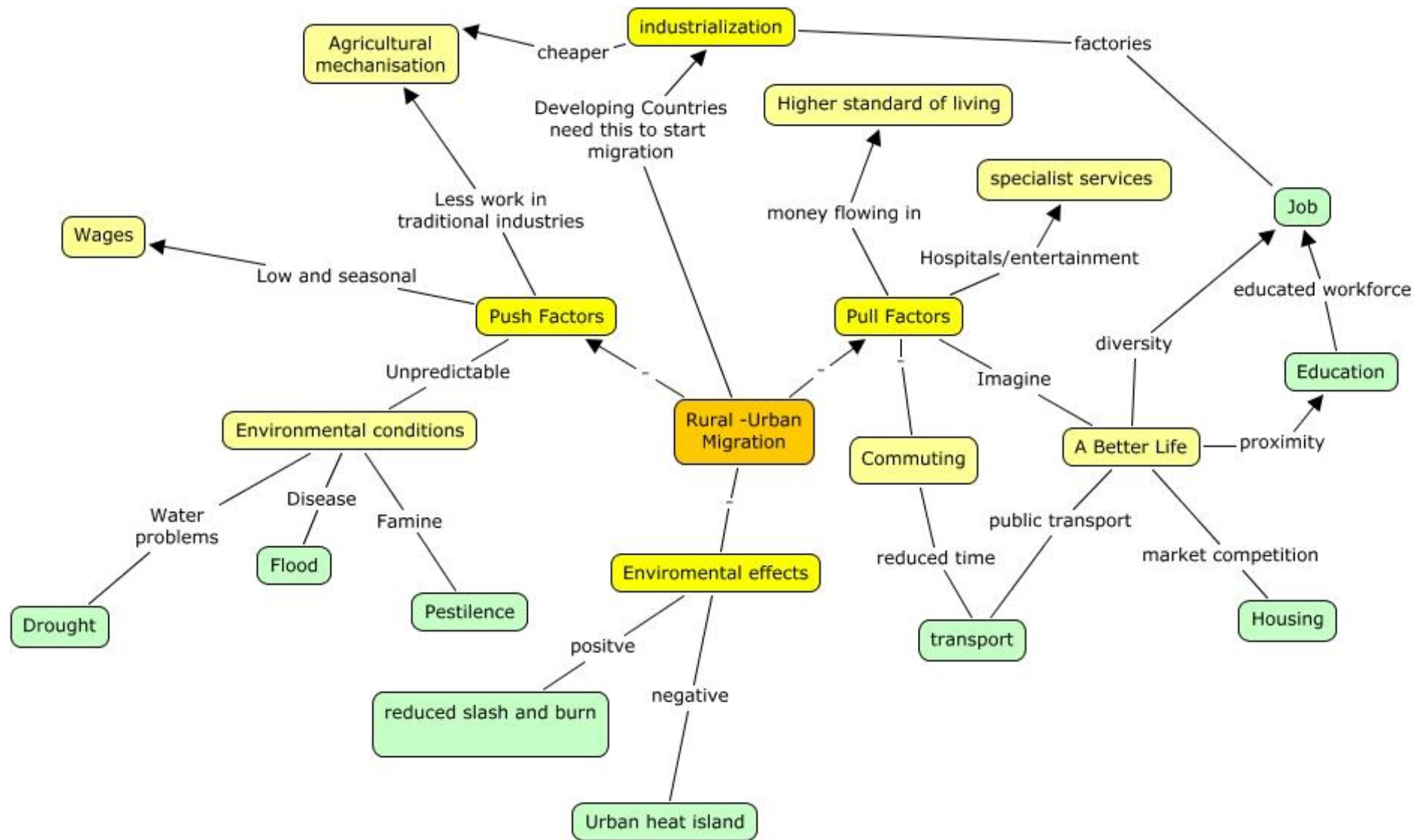


# THE STORY

## Chapter 2: the Solutions

*Urban conurbations are becoming increasingly dense, especially in Asia. Mass land public transport is therefore increasingly essential, but these need to be complemented by other modes of movement*





# Urban Migration





**So there soon wont be enough  
space for all of us to live this!!**







**Which means we could all be  
living like this one day!!**

**“sustainable urban planning offers the best  
means to slow the rate of global warming”**

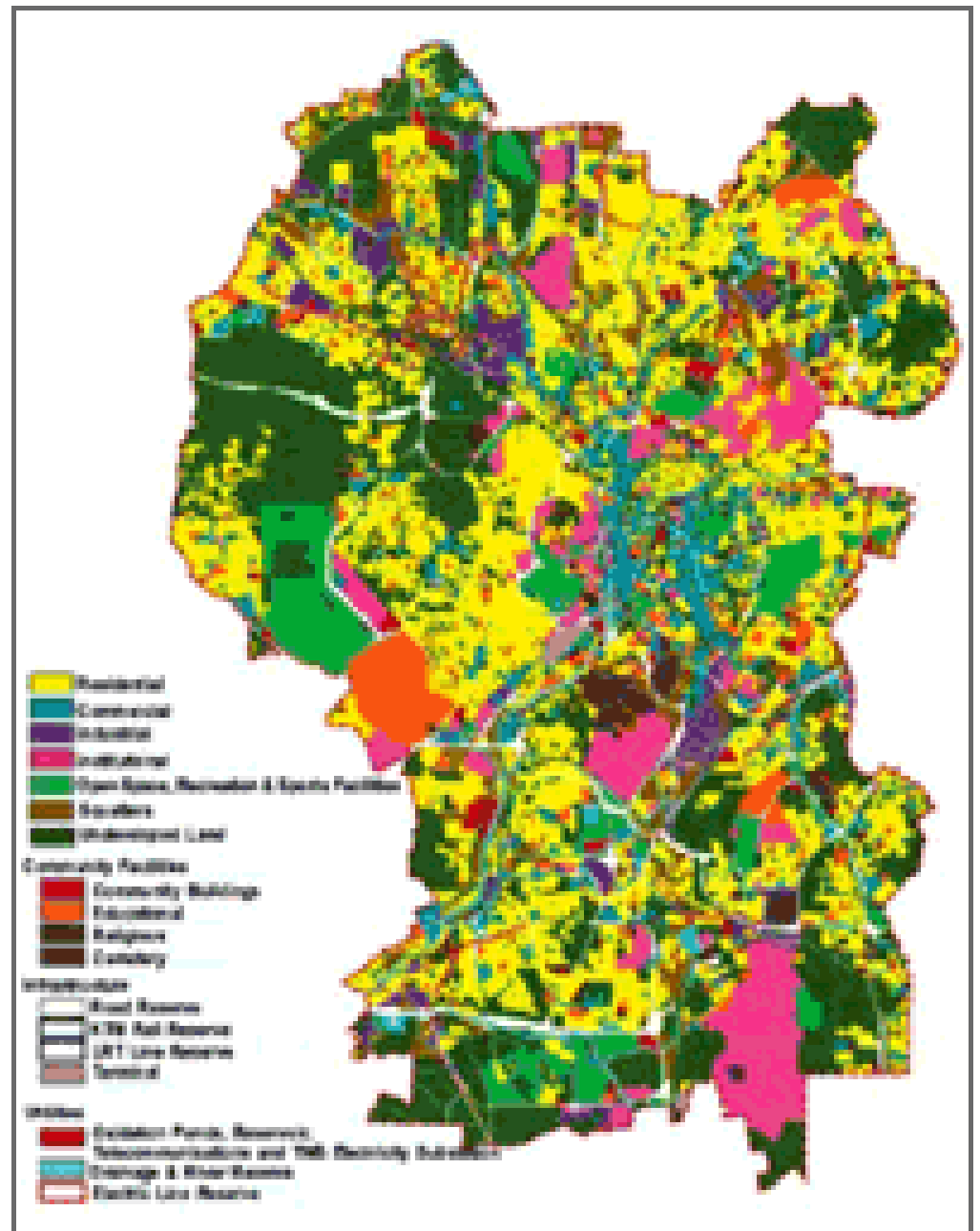
**The World Bank Report, the *Little Green Data Book* 2009**



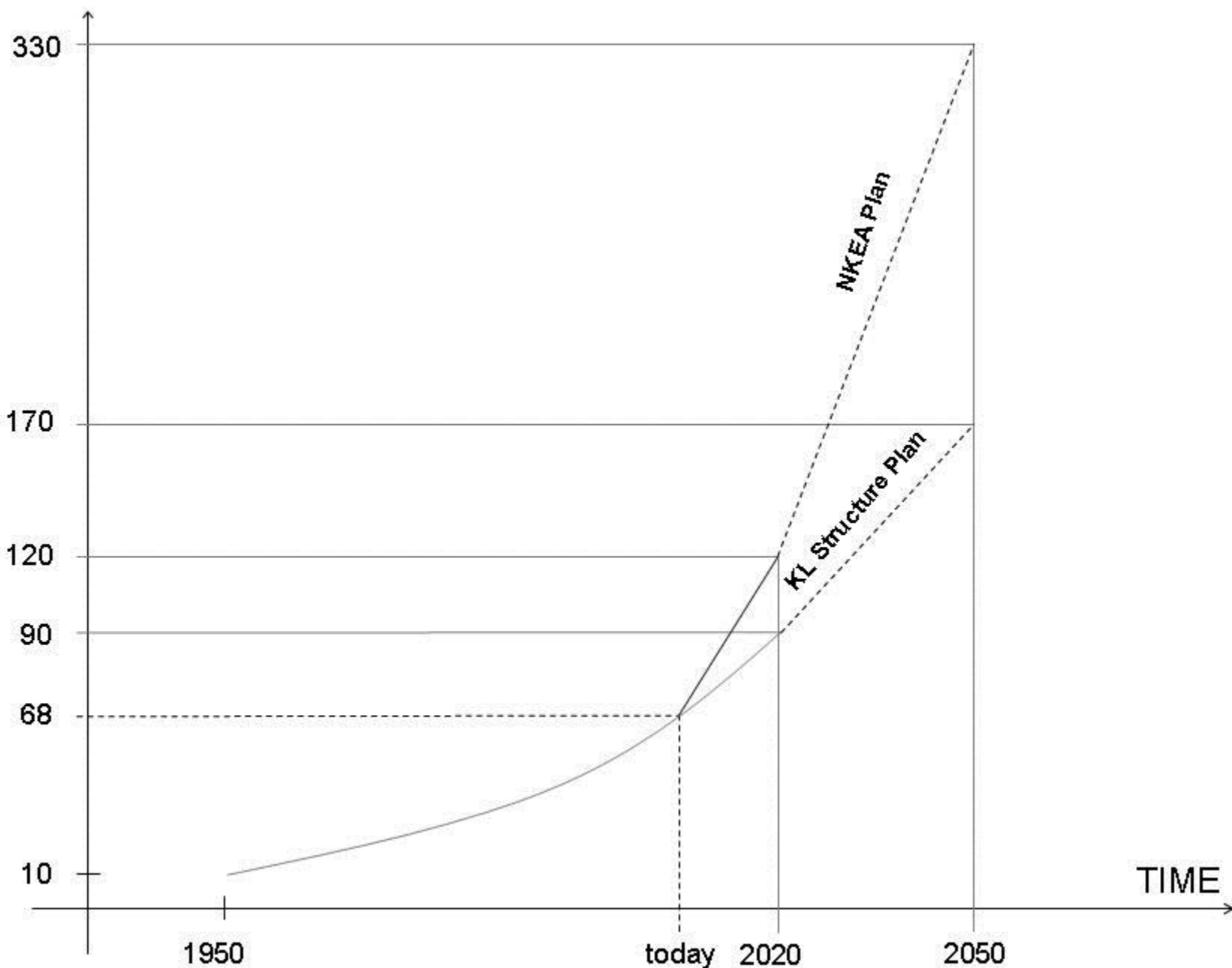
kuala lumpur



243 sqkm



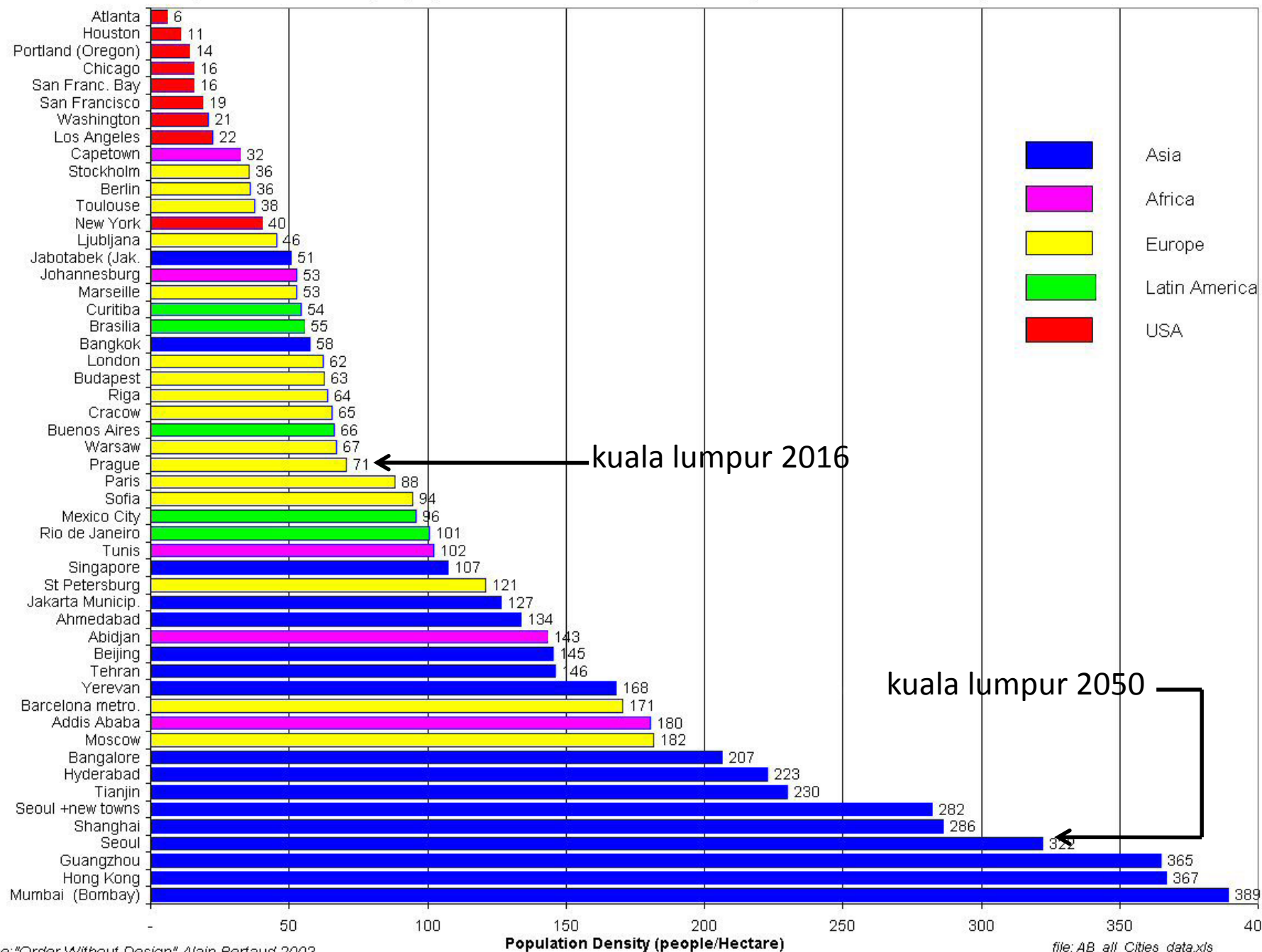
DENSITY OF KL ppl/hectare



Kuala Lumpur Density Growth over 100 - years



Comparative average population densities in built-up areas in 49 metropolitan areas





Kuala Lumpur Traffic Congestion



# PETA TRANSIT BERINTEGRASI LEMBAH KLANG

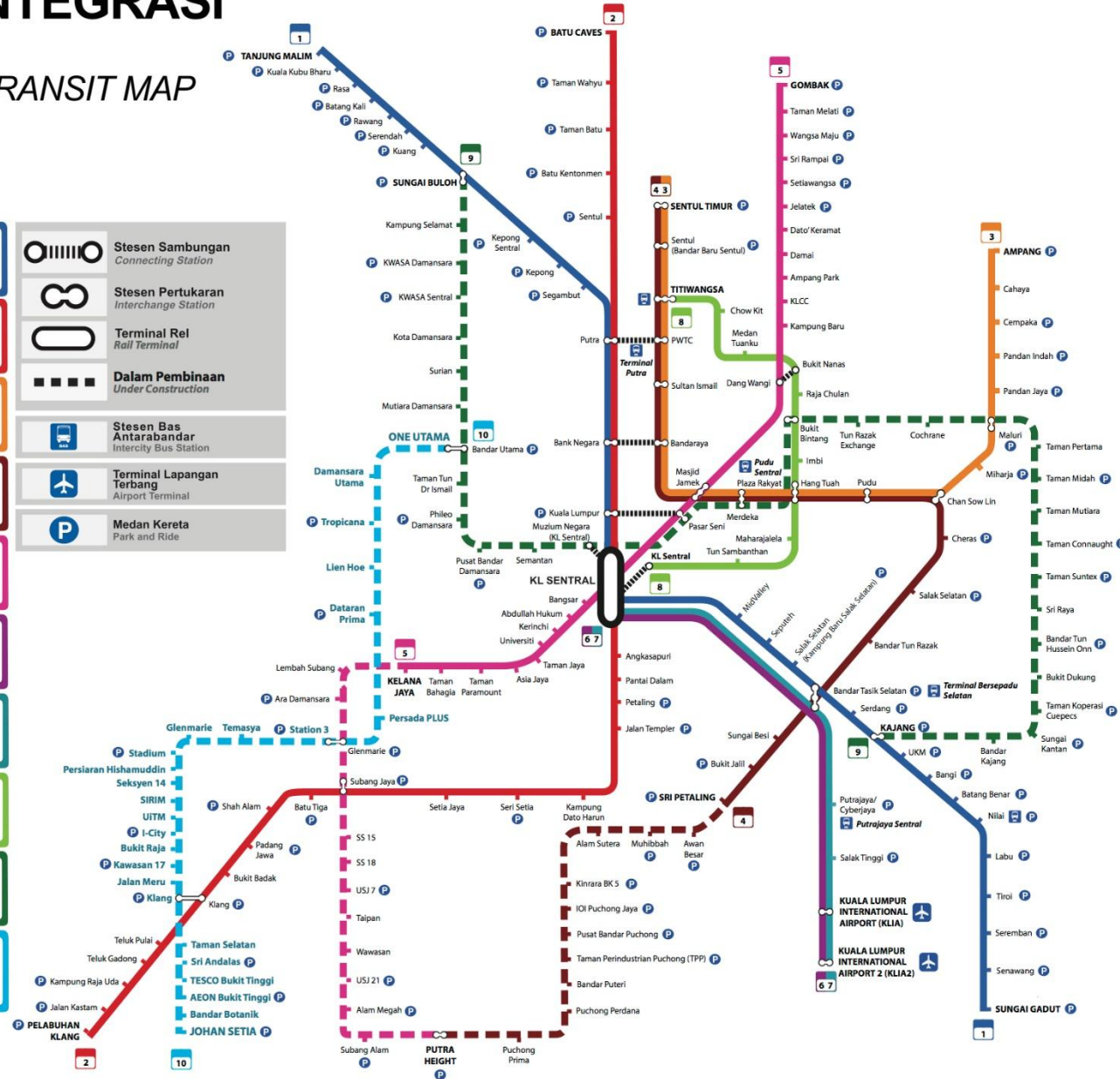
KLANG VALLEY INTEGRATED TRANSIT MAP

## PETUNJUK LEGEND

LALUAN REL RAIL LINES

- 1**  **KTM LALUAN SEREMBAN**  
*KTM SEREMBAN LINE*
- 2**  **KTM LALUAN PEL. KLANG**  
*KTM PORT KLANG LINE*
- 3**  **LRT LALUAN AMPANG**  
*LRT AMPANG LINE*
- 4**  **LRT LALUAN SRI PETALING**  
*LRT SRI PETALING LINE*
- 5**  **LRT LALUAN KELANA JAYA**  
*LRT KELANA JAYA LINE*
- 6**  **LALUAN KLIA EKPRES**  
*KLIA EXPRESS LINE*
- 7**  **LALUAN KLIA TRANSIT**  
*KLIA TRANSIT LINE*
- 8**  **LALUAN MONOREL KL**  
*KL MONORAIL LINE*
- 9**  **MRT LALUAN SG. BULOH-KAJANG**  
*MRT SG. BULOH-KAJANG LINE*
- 10**  **LRT LALUAN BANDAR UTAMA - KLANG**  
*LRT BANDAR UTAMA - KLANG LINE*  
\*Nama stesen tertakluk kepada pindaan pihak berkuasa berkaitan  
Station names subject to change by the relevant authorities

-  **Stesen Sambungan**  
*Connecting Station*
-  **Stesen Pertukaran**  
*Interchange Station*
-  **Terminal Rel**  
*Rail Terminal*
-  **Dalam Pembinaan**  
*Under Construction*
-  **Stesen Bas Antarabandar**  
*Intercity Bus Station*
-  **Terminal Lapangan Terbang**  
*Airport Terminal*
-  **Medan Kereta**  
*Park and Ride*





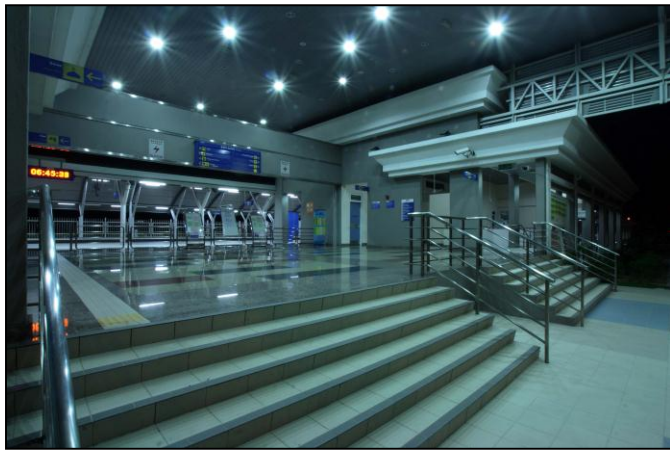


erl  
lrl

monorail  
commuter rail







Rawang-Ipoh ETS Stations



# ETS, Ipoh Station







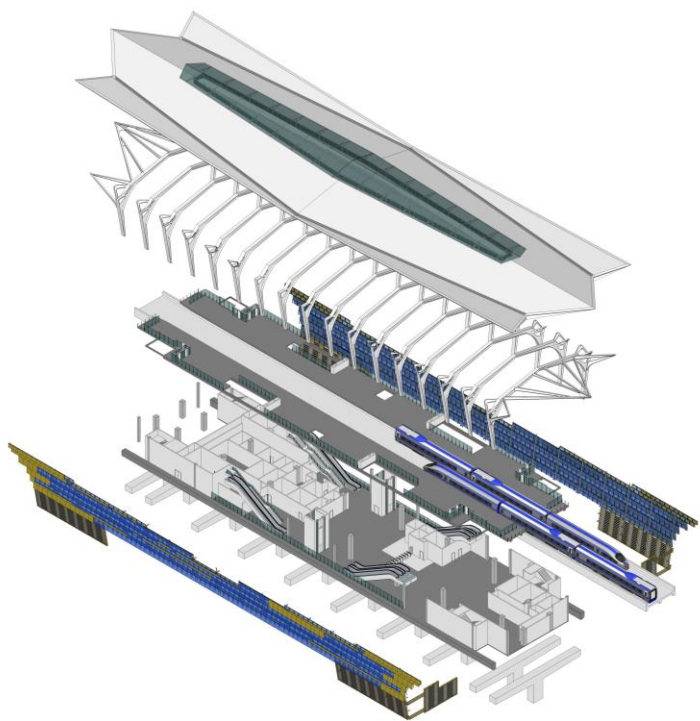
Putrajaya Sentral  
ERL and Monorail





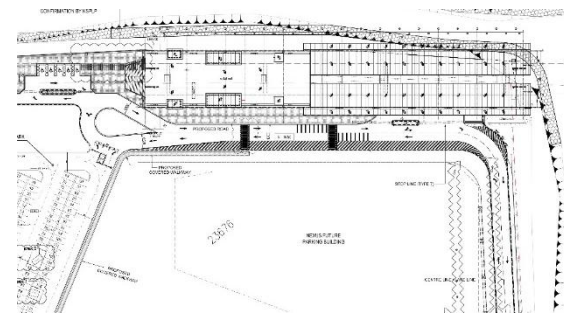
Puduraya Sentral, Kuala Lumpur  
LRT linked to Bus and Taxi





LRT3 Kelana Jaya to Klang





Klang Valley Commuter Rail Stations  
(Subang SkyPark)



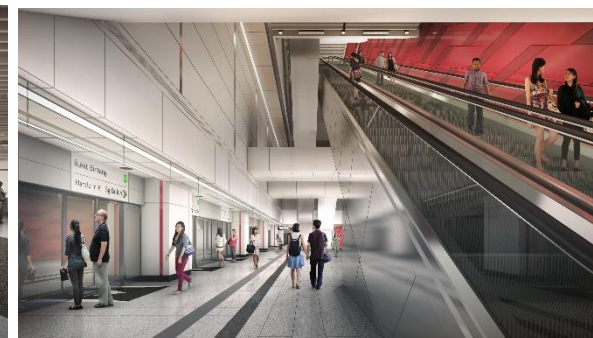
## MRT Lines 1, 2 and 3





MRT 1 Stations Exterior





MRT 1 Stations Interior





HSR



## THE PAN-ASIA RAILWAY NETWORK

### Central Route

Kunming → Yuxi → Mohan →  
Vientiane → Bangkok → Kuala Lumpur  
→ Singapore

### Western Route

Kunming → Dali → Baoshan → Ruili →  
Yangon → Bangkok → Kuala Lumpur  
→ Singapore

### Eastern Route

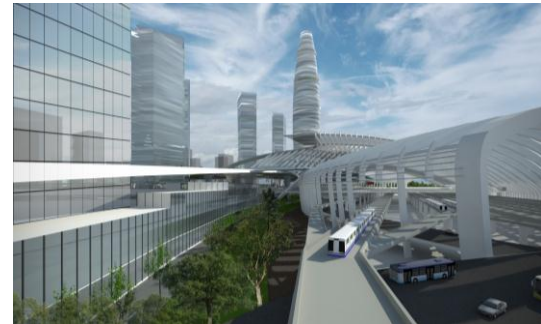
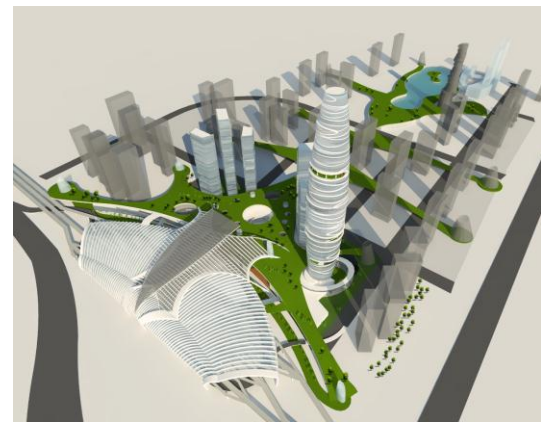
Kunming → Yuxi → Mengzi → Hekou  
→ Hanoi → Ho Chi Minh → Phnom  
Penh → Bangkok → Kuala Lumpur →  
Singapore





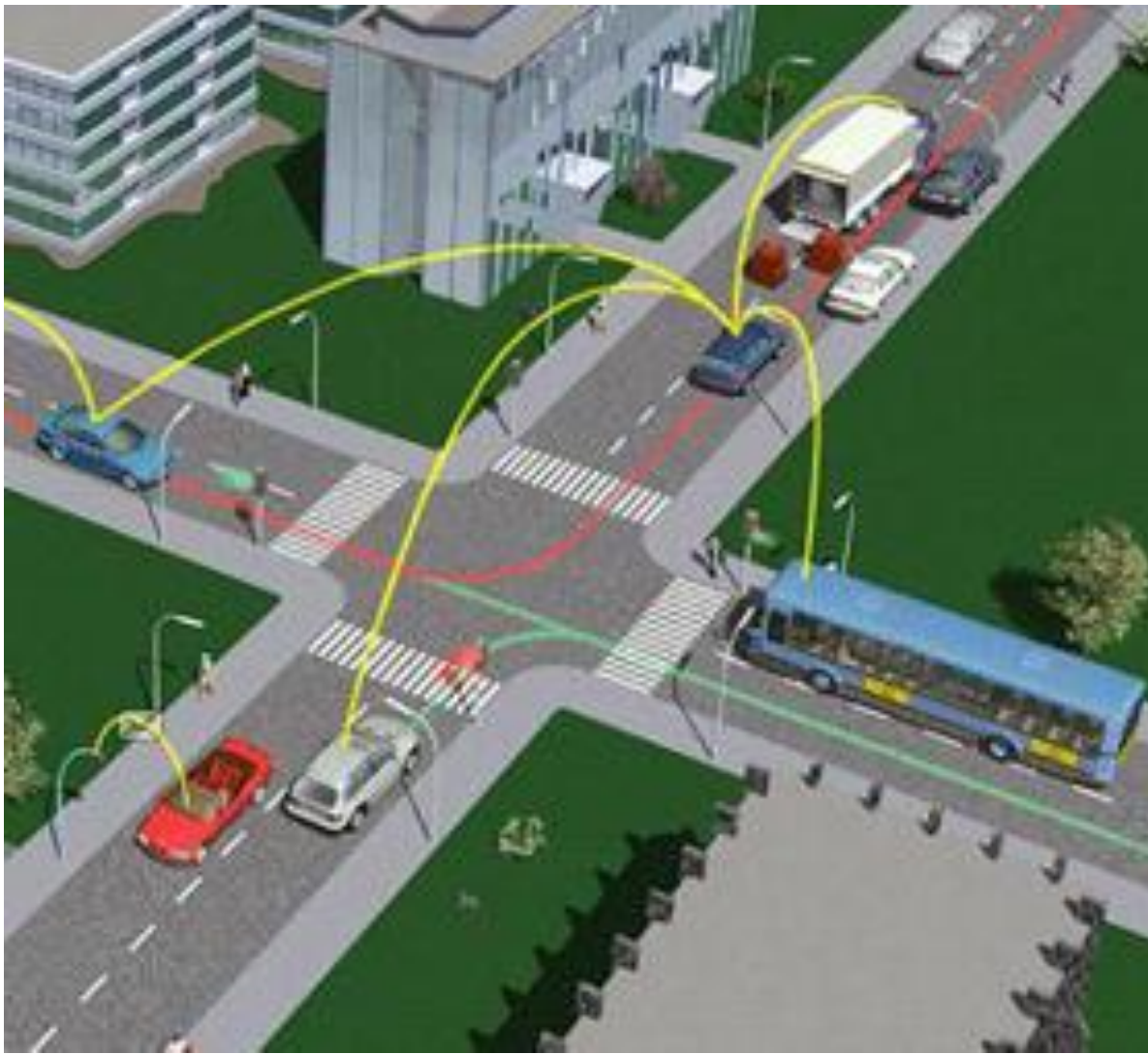
Malaysia-Singapore  
High-Speed Rail





HSR Station Precinct at Bandar 1 Malaysia KL





Road Transport Innovations for Smart Cities



## Urban Congestion Pricing







urban escalators



urban elevators



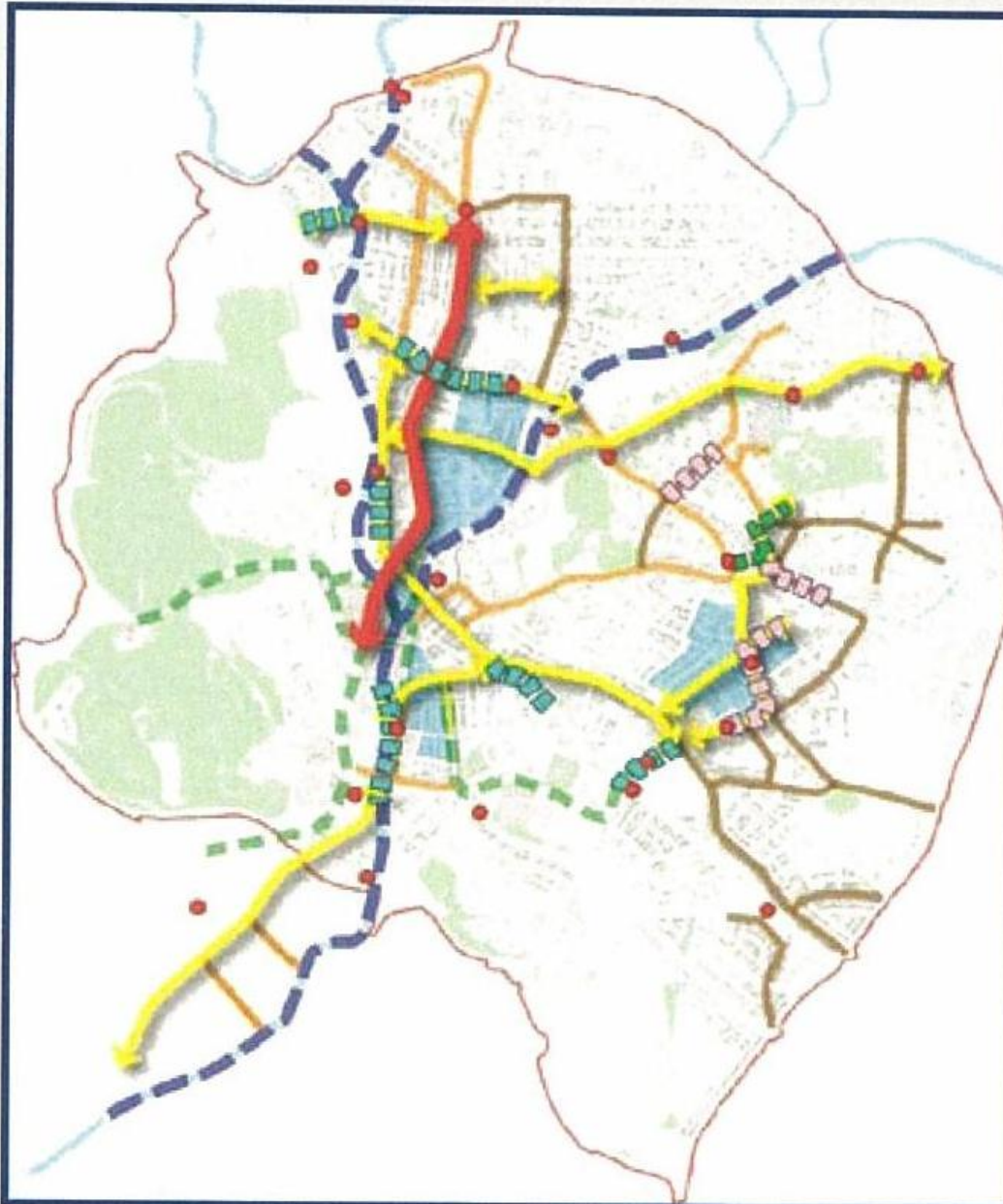
urban travellers

urban sky-bridges






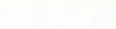







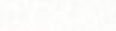

a comprehensive network will be developed for KL city center



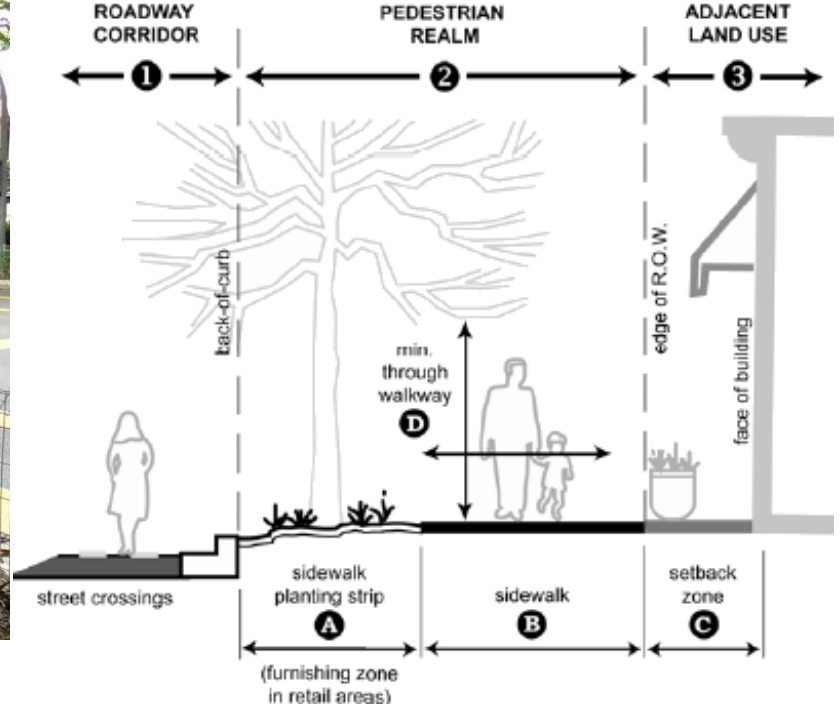
#### Comprehensive plan/Long term

-  Major Spine
-  Primary Route
-  Secondary Route (1st Wave)
-  Secondary Route (2nd Wave)
-  Riverfront Walkway
-  Heritage Trail
-  Pedestrian Priority Zone
-  LRT Stations

#### Priority walkway (length, construction period)

-  DBKL  
(~2 km, Oct-Sep 2011)
-  SPNB  
(~2 km, Jun-Dec 2010)
-  PETRONAS  
(~0.5 km, Apr-Feb 2011)





pedestrian-friendly urbanism





bicycle-friendly urbanism





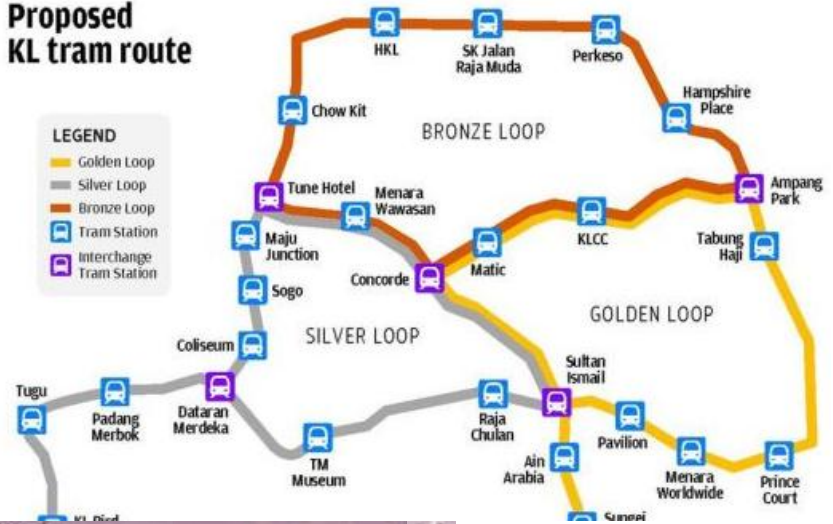
Revival of the Tram

# Kuala Lumpur Tram

## Proposed KL tram route

### LEGEND

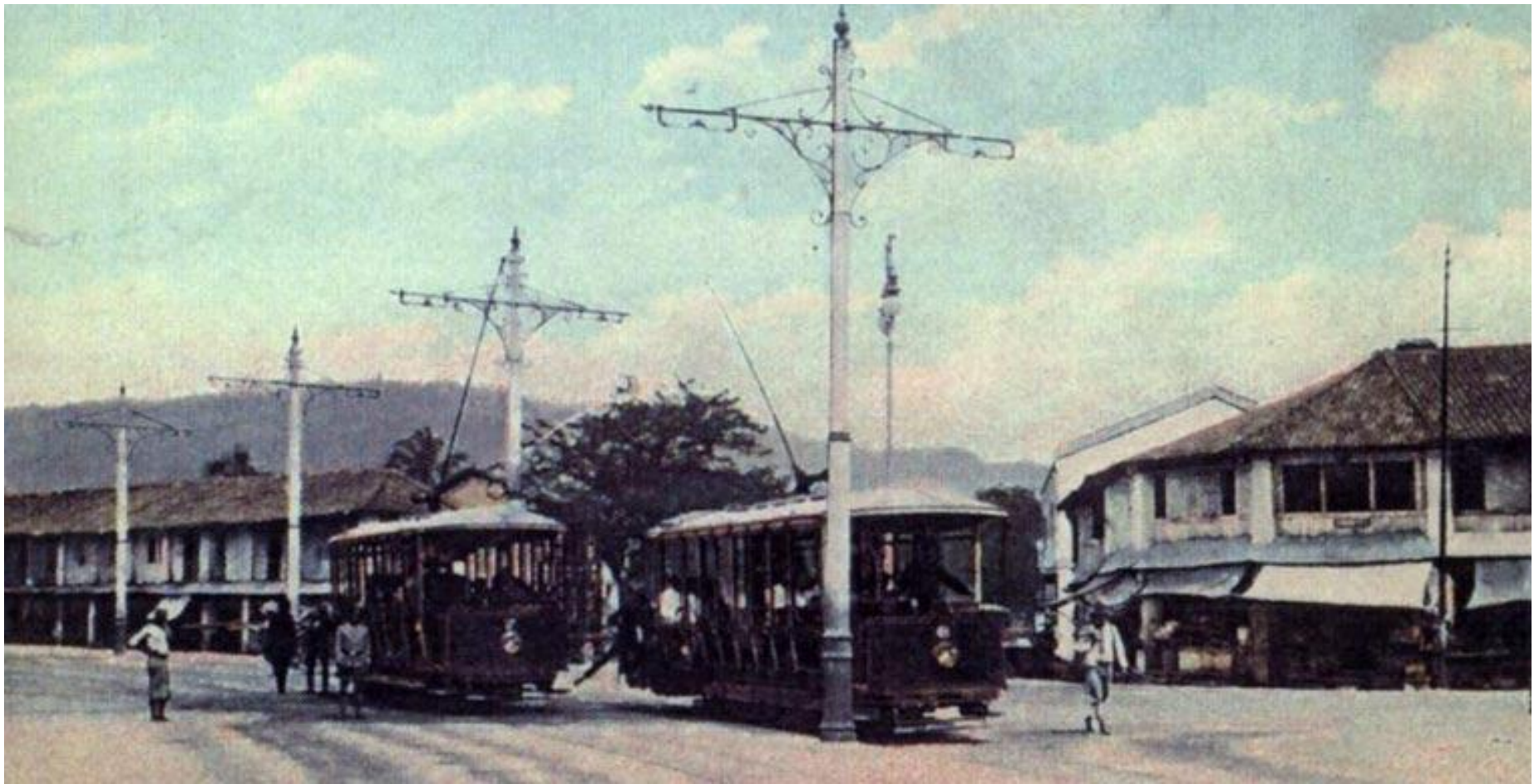
- Golden Loop
- Silver Loop
- Bronze Loop
- Tram Station
- Interchange Tram Station



Will Jarman 2010

**D'TRAM**  
The Effective People Mover

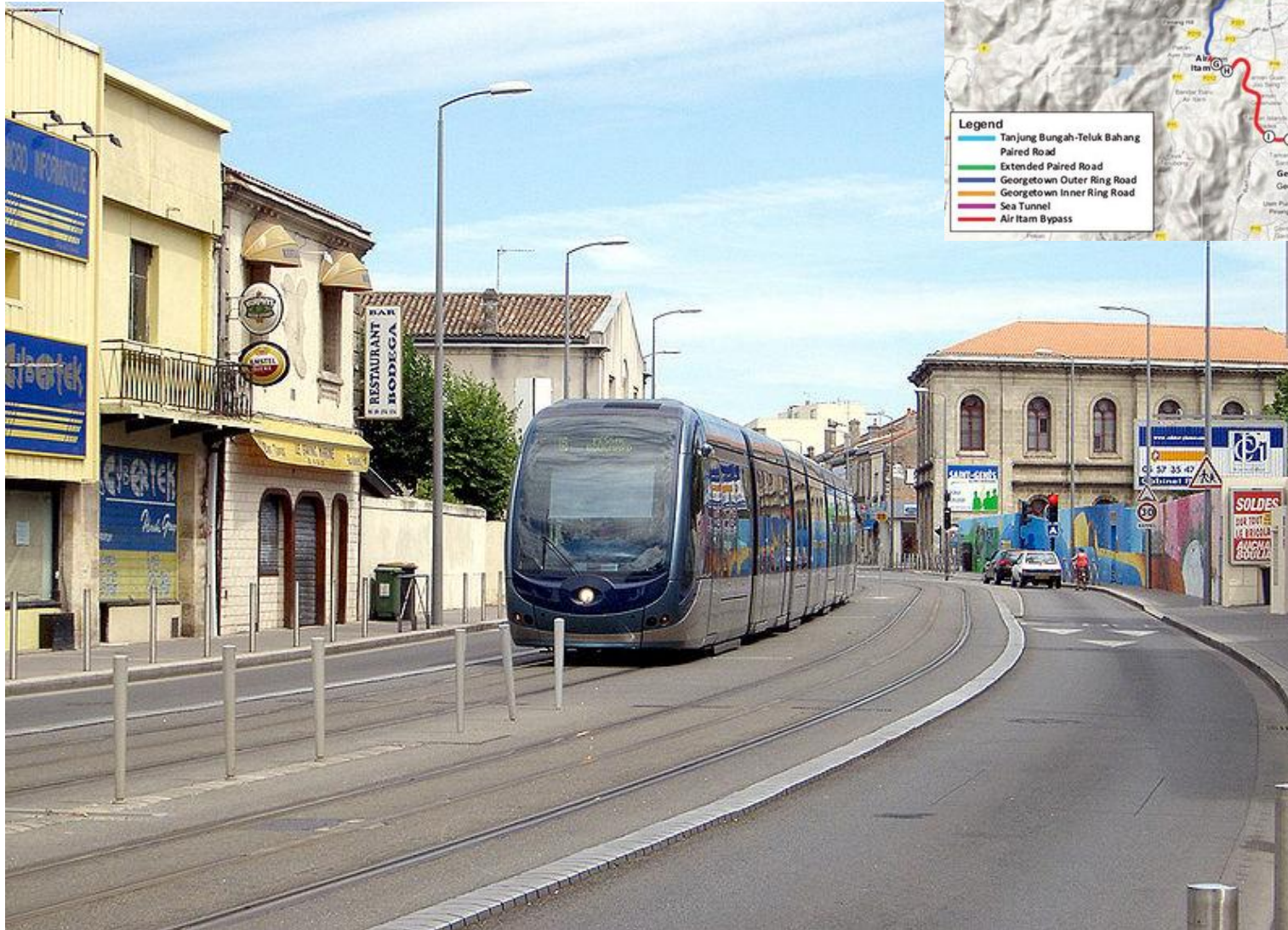




Pulau Pinang Tram



# Pulau Pinang Tram





# Johor to look into tram services

By ZAZALI MUSA  
zaza@thestar.com.my

**JOHOR BARU:** Tram services are likely to be introduced as options for Jalan Wong Ah Fook to transport people into the city and discourage them from driving.

Johor Baru Mayor Datuk Abdul Rahman Mohamed Dewam said Johor Baru could learn from other cities where tram services were part of the public transportation services.

He singled out San Francisco and Istanbul as these two cities the tram services have successfully served as transportation modes for locals and tourists.

Abdul Rahman said the Johor Baru City Council (MBJB) was looking at the tram services as part of the Johor Baru city centre transformation project.

"For the transformation project to succeed, the Johor Baru city centre has to be pedestrianised instead of having vehicular traffic," he told StarMetro recently.



**Transformation:** Abdul Rahman (right) with Bangsar Heights - MKL Group of Companies president and chief executive officer Datuk Dr Robert Lim looking at the model of Causeway Regency @ JB City Centre model.

Abdul Rahman said this at the launch of the 30-storey luxurious condominium project Causeway Regency @ JB City Centre located along Jalan Wong Ah Fook by Bangsar Heights Pavilion Sdn Bhd.

He said looking at some of the vibrant cities in the world, the trend

now was to attract pedestrians that businesses and landowners found to be greater contributors to economic activities in the areas.

"We need to discuss further with the state government and Iskandar Regional Development Authority on the proposal to introduce the tram

# Tram service for Putrajaya within three years

BY FAIRUZ MOHD SHAHAR - 21 FEBRUARY 2016 @ 4:17 PM



6



6



0



**PUTRAJAYA:** The Federal Territories Ministry plans to develop a tram system at the federal administrative centre here to overcome traffic congestion issues.

Its minister Datuk Seri Tengku Adnan Tengku Mansor said the tram service is a suitable mode of transportation for Putrajaya folk to commute during peak hours.

"We have decided on trams because it is comfortable for the commuters to travel to work and after working hours. Furthermore, the cost to develop the system is much cheaper than monorails.

"The project is expected to start three years from now.

"The tram will connect Putrajaya to Cyberjaya as the traffic congestion often occurs between these two locations, especially during peak hours," he said after attending Kenduri 1Wilayah Persekutuan at Persint 18, today.

MY MAXIS 4G

10:12 PM

thestar.com.my

Our Sites

More

Nation

Home > News > Nation

Sunday, 20 February 2011 | MYT 12:00 AM

## 'Green' trams for Malacca

BY CINDY TAN



FACEBOOK



TWITTER



GOOGLE+



LINKEDIN



### Popular Now in News

Hunt for man who gave schoolgirl drugs for sex

Sabah Water Dept duo had RM30mil in land titles, RM30mil in bank accounts

Police to record statement from Jamal Yunus

Yong: Premature to call for Pairin's resignation

Couple and Uber driver harassed at Penang airport

both the state and federal governments," Najib said at the ground-breaking ceremony in Ayer Keroh yesterday.

**MALACCA:** The state is set to be the first in the region to operate natural gas vehicle (NGV) trams, in line with the Government's green energy policy.

Prime Minister Datuk Seri Najib Tun Razak said the "next generation trams" would be attractive to locals and foreigners alike.

"We must choose a form of development that is environmentally friendly if it is to be sustainable.

"It is important for Malaysia to go green and that is why this tram project has received full support from





	tipo de linha	Capacidade
	Circular Centro	30
	Convencional	80
	Convencional Articulado	160
	Alimentador	80
	Alimentador Articulado	160
	Interbairros Padron	110
	Interbairros Articulado	160
	Linha Direta	110
	Expresso Biarticulado	270

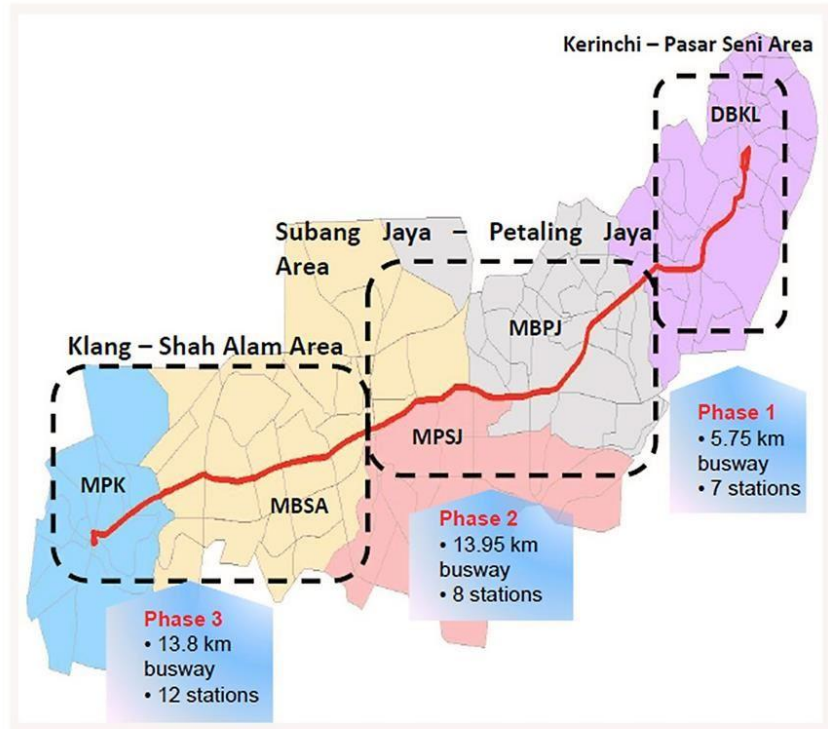
# BRT Solutions





## BRT Solutions

### KL-Klang BRT Alignment

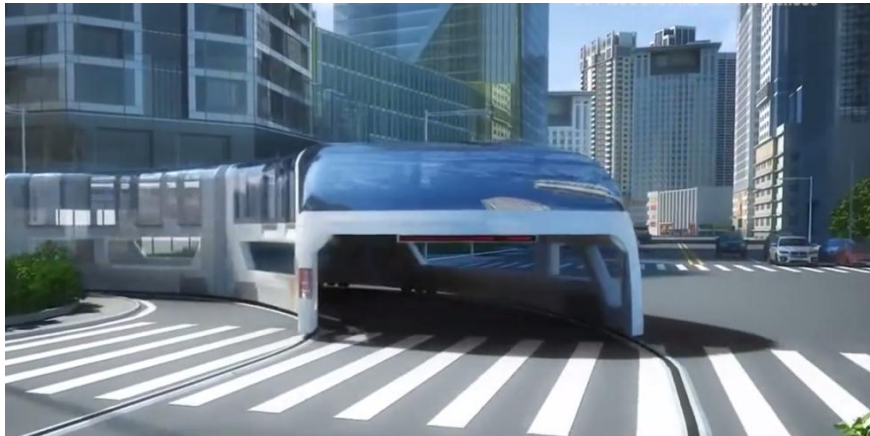






Pod Cars





Transit Elevated Bus (TEB)





Suspended Urban Rail Systems



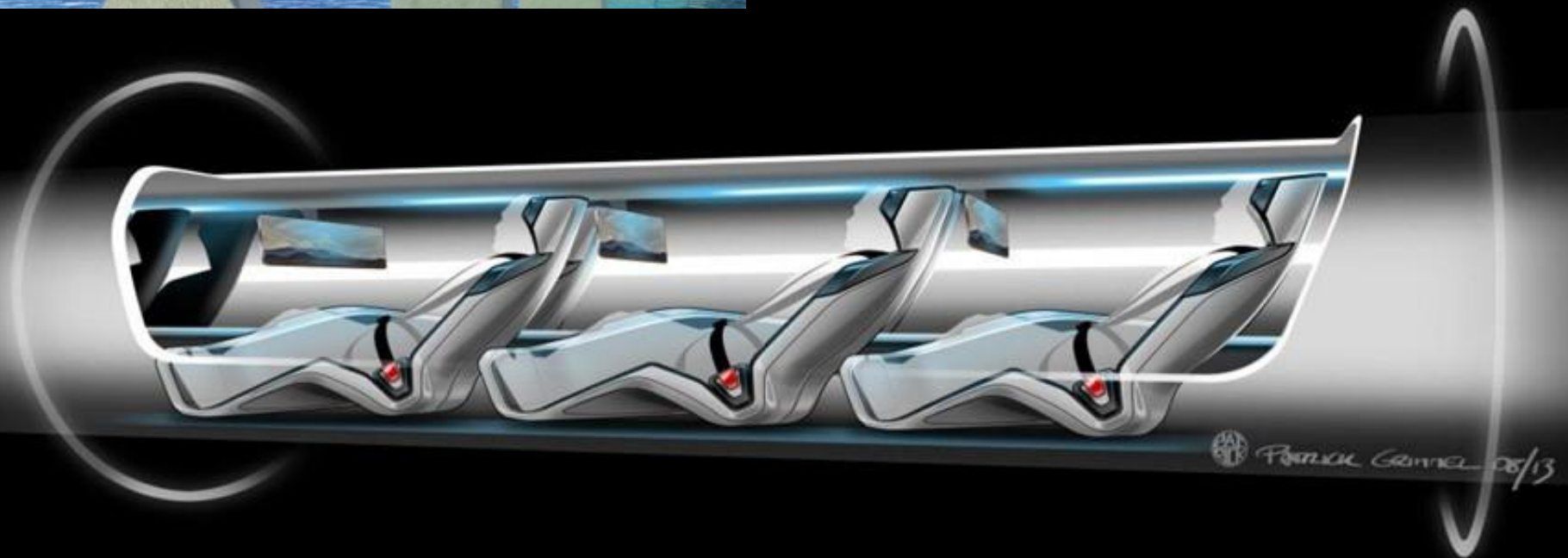
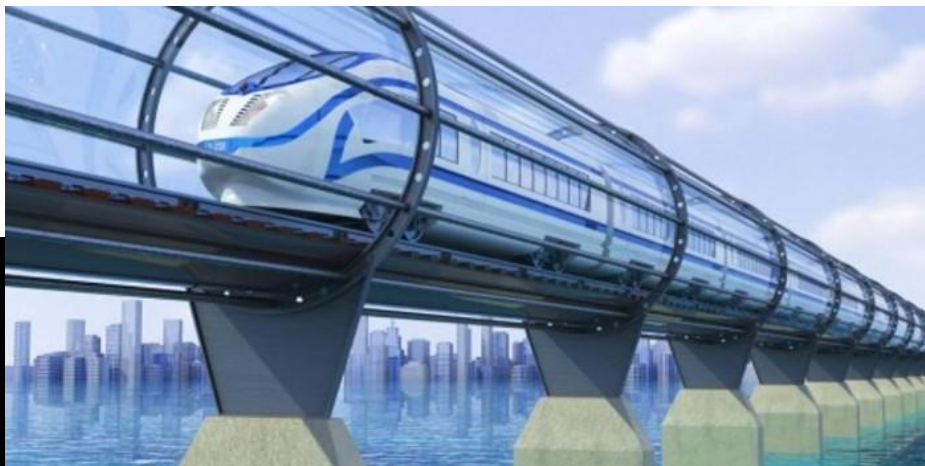


next  
mobility goes social



What's Next?





What's Next? The Hyperloop Transporter!





What's Next? Flying Cars!

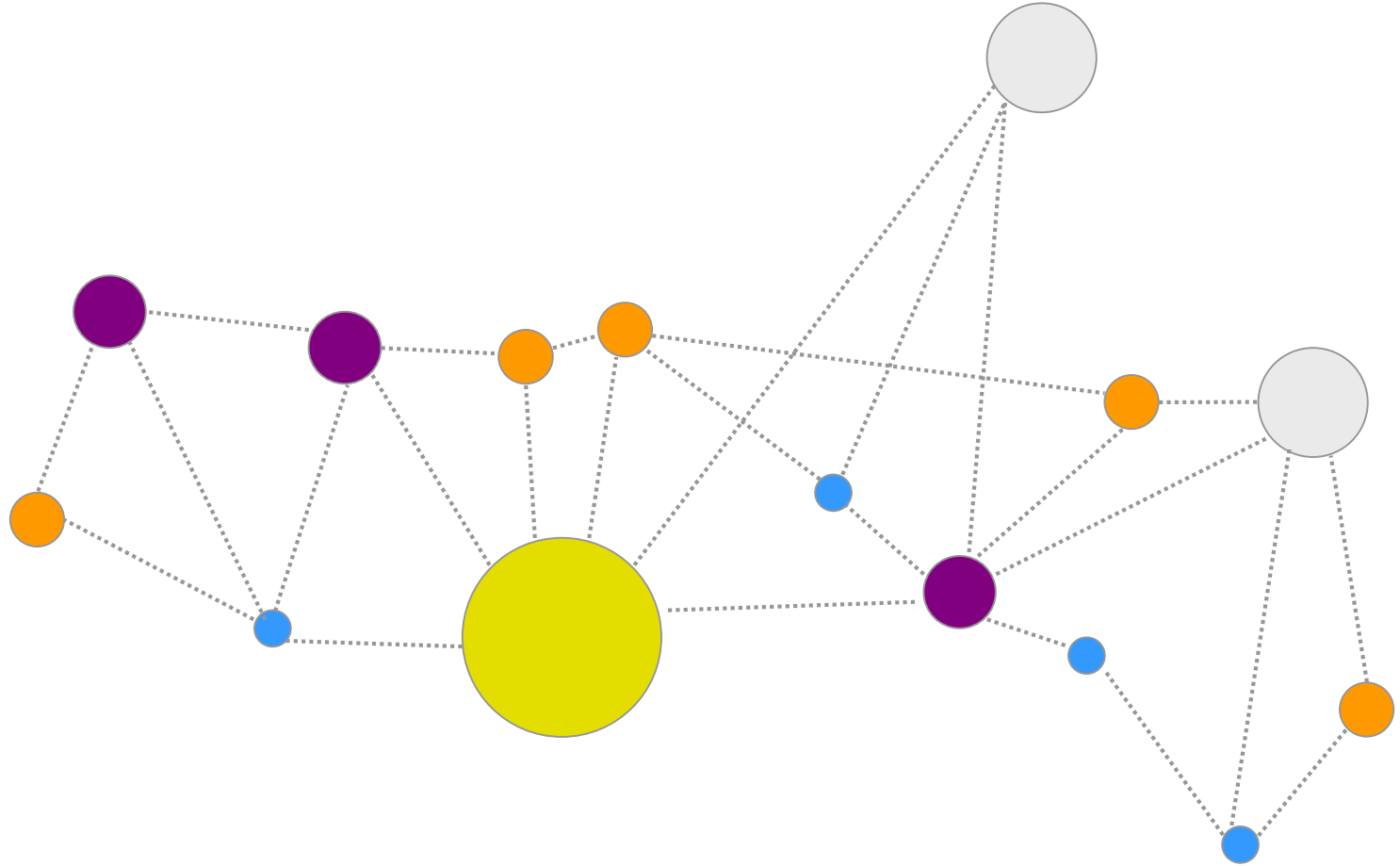


# THE STORY

## Chapter 3: the Experiments

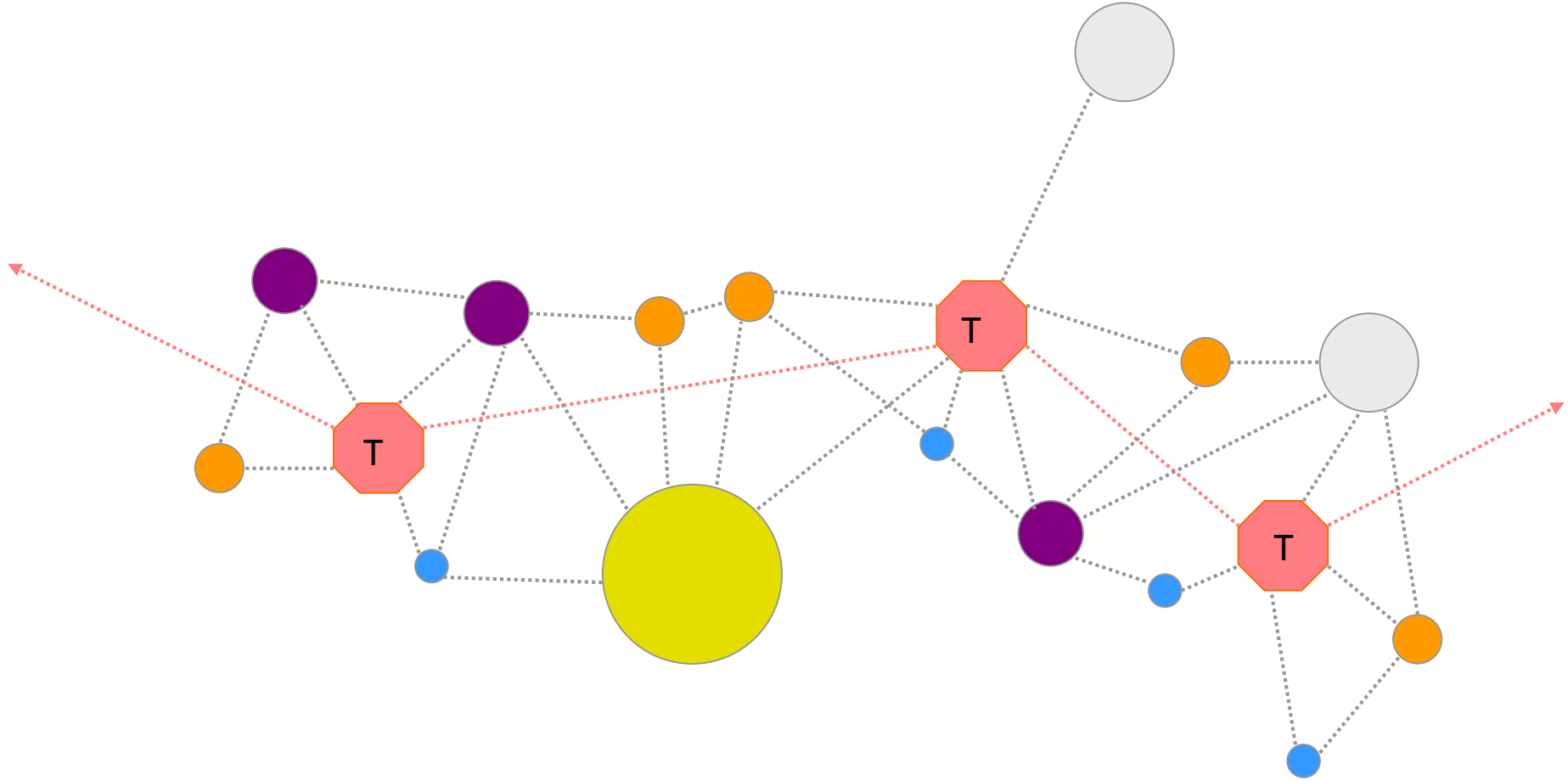
*In modern cities (or in the modern precincts of older cities) which are planned from scratch, transport experts, urban planners and architects are experimenting with innovative solutions to create smart transportation oriented developments*



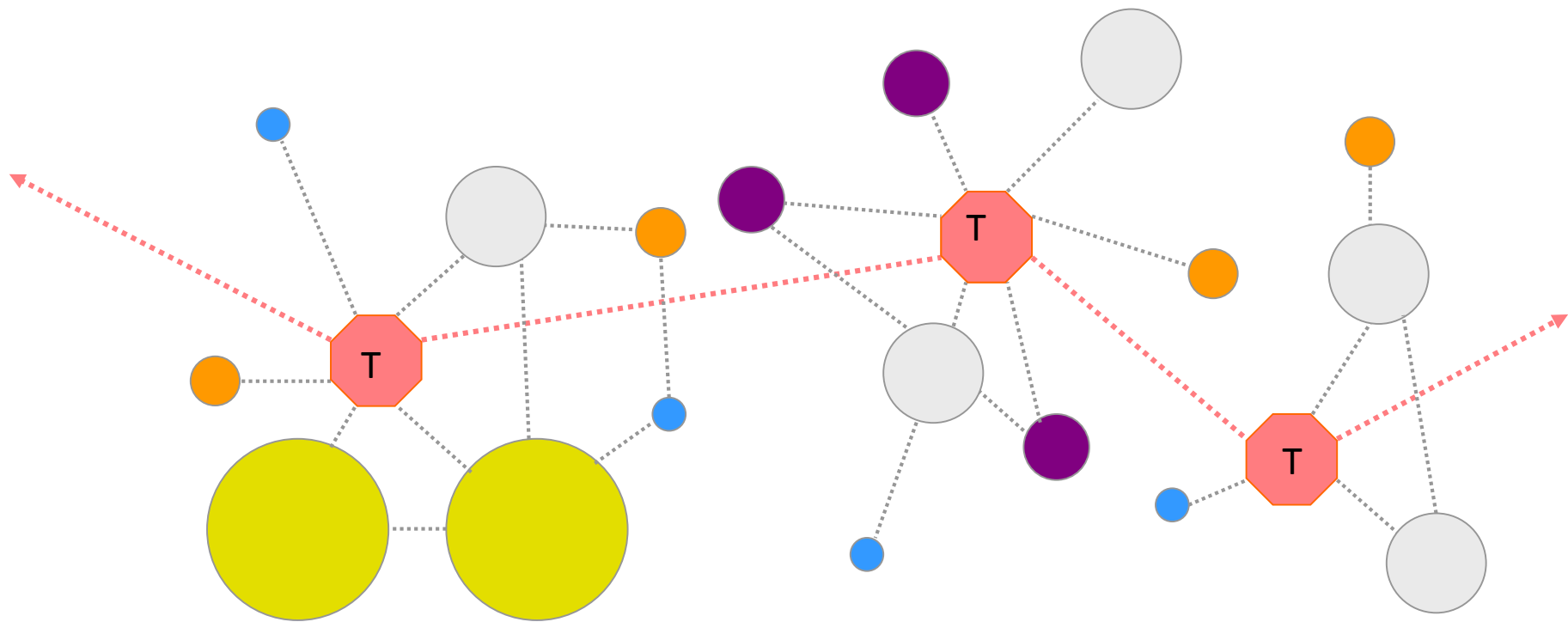


evolution of transit-oriented high-density integrated mixed-use urban development



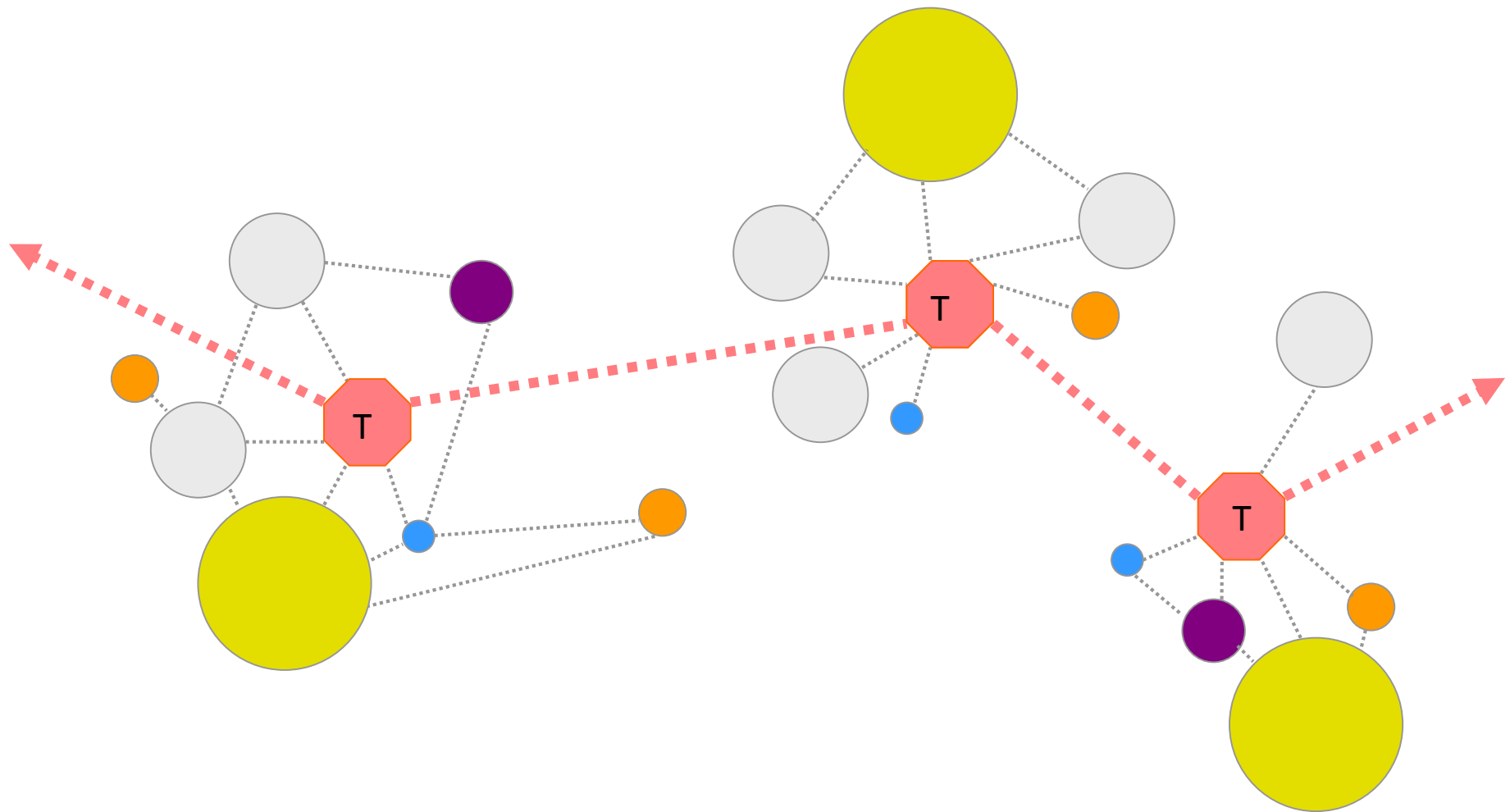


evolution of transit-oriented high-density integrated mixed-use urban development - **stage 1**

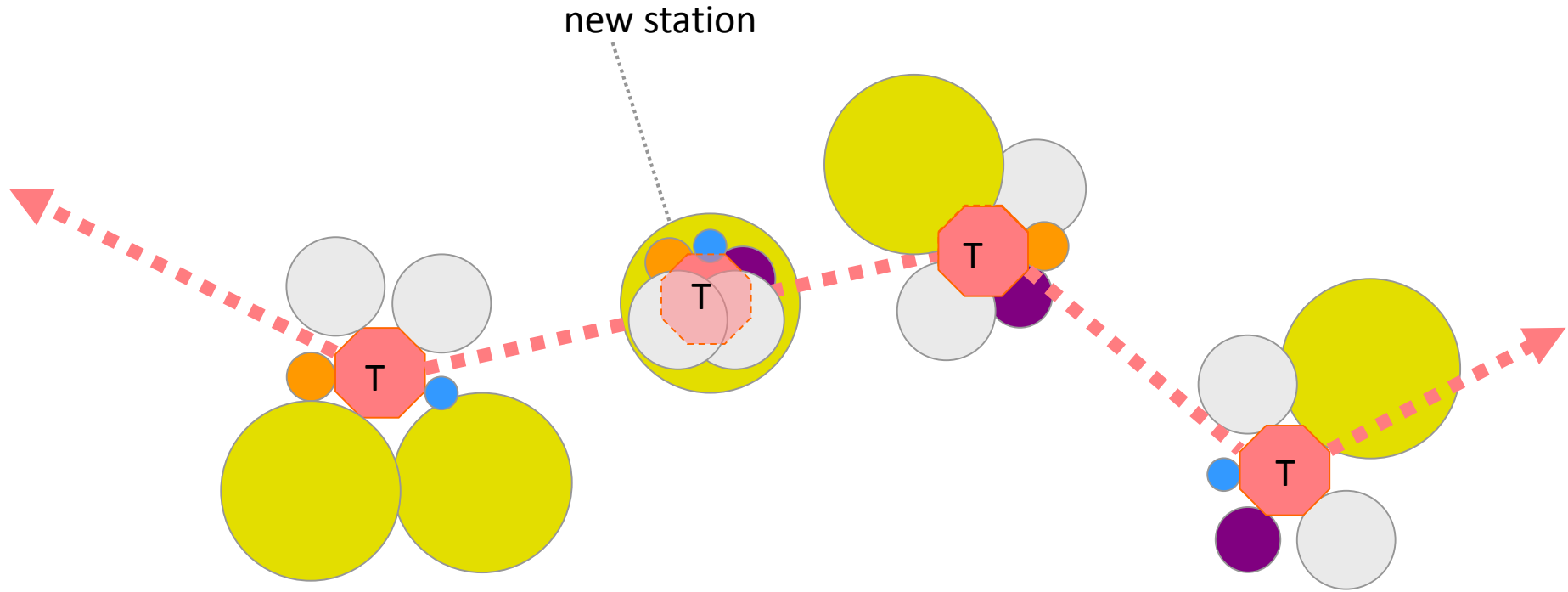


evolution of transit-oriented high-density integrated mixed-use urban development - **stage 2**





evolution of transit-oriented high-density integrated mixed-use urban development - **stage 3**



evolution of transit-oriented high-density integrated mixed-use urban development - **stage 4 the TOD City**





Rockefeller Center,  
New York City







Canary Wharf, London







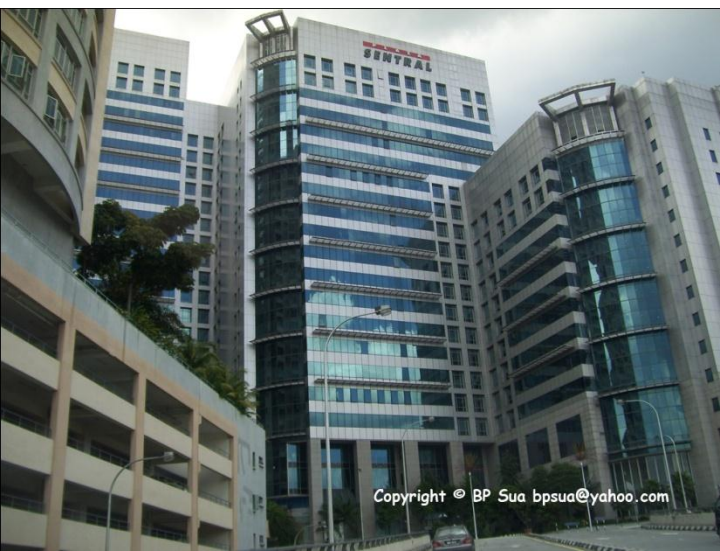
Roppongi Hills, Tokyo





Ion Center, Singapore





KL Sentral, Kuala Lumpur



Kuala Lumpur City Center





## TRX, Kuala Lumpur





Kwasa Land, Selangor



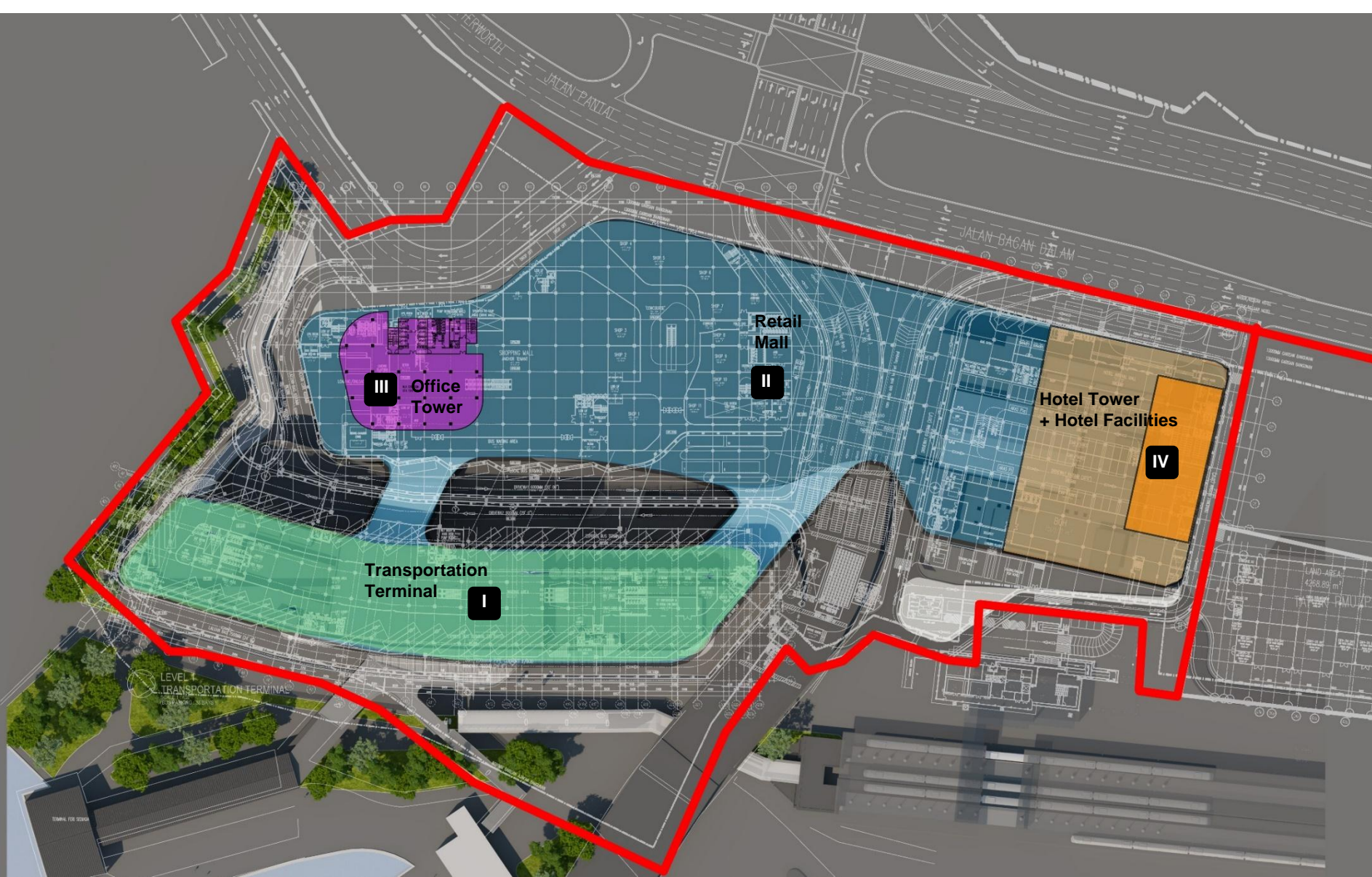




# **PENANG SENTRAL**

Proposed Integrated Transportation Hub, Retail Mall & Hotel,  
Butterworth, Pulau Pinang





PENANG SENTRAL – MASTER PLAN





PENANG SENTRAL – MASTER PLAN

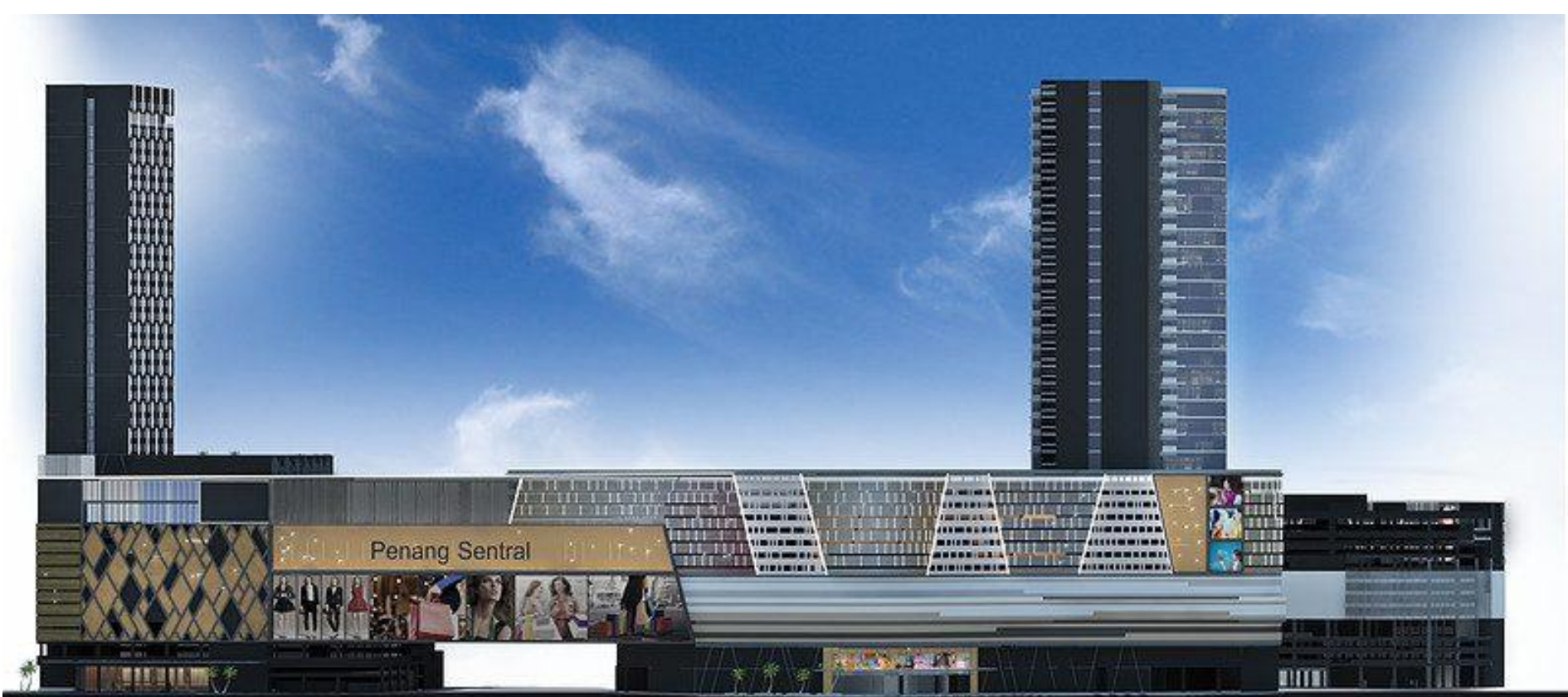






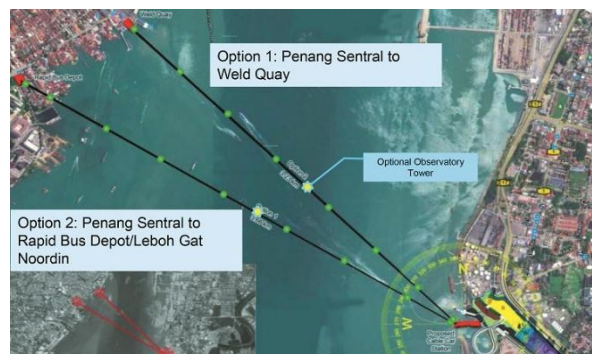
PENANG SENTRAL – SECTION





PENANG SENTRAL – ELEVATION





PENANG SENTRAL – PERSPECTIVE





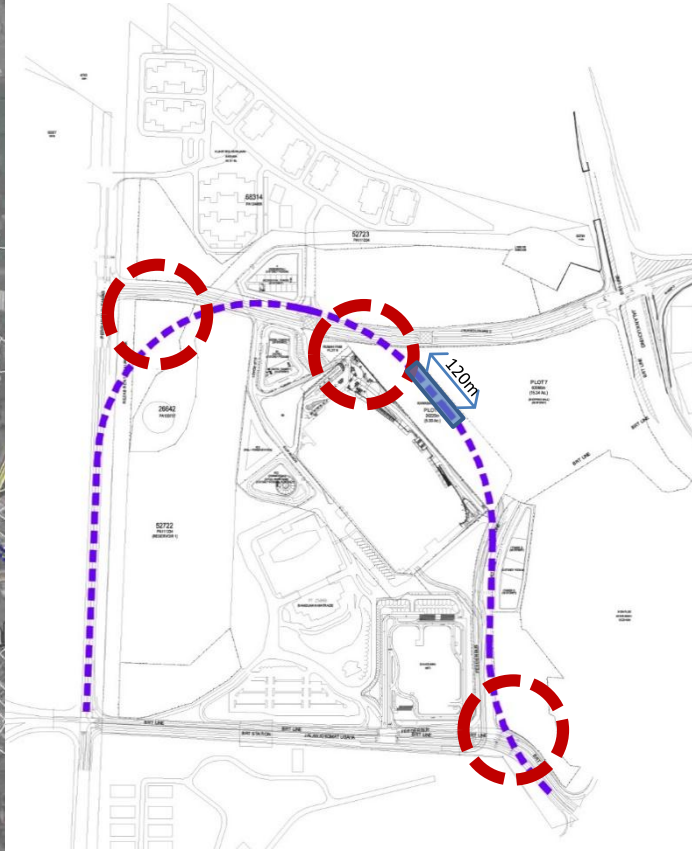
KL Metropolis, Kuala Lumpur







## MRT 3 ALIGNMENT





Muslim  
Cemetery

From/ to Segambut  
KTMB Station

# INTRODUCTION

## CONNECTIVITY FROM KTMB SEGAMBUT

- Option 1 to Travelator (798.34m)
- Option 2 to Station MRT (1,007.17m)
- Option 3 to Station MRT (1,133.45m)
- Option 4 to Station MRT (949.48m)
- 7A to Parcel 3 (835.918m)

RESIDENCE

HOTEL

RESIDENCE

RESIDENCE

RESIDENCE

OFFICES

RESIDENCE

RESIDENCE

BRT  
STATION



# INTRODUCTION

## PEDESTRIAN LINKAGES

**Travelator** = fastest way  
to move around a neighborhood

Distance connection between places of  
interest/ event spaces



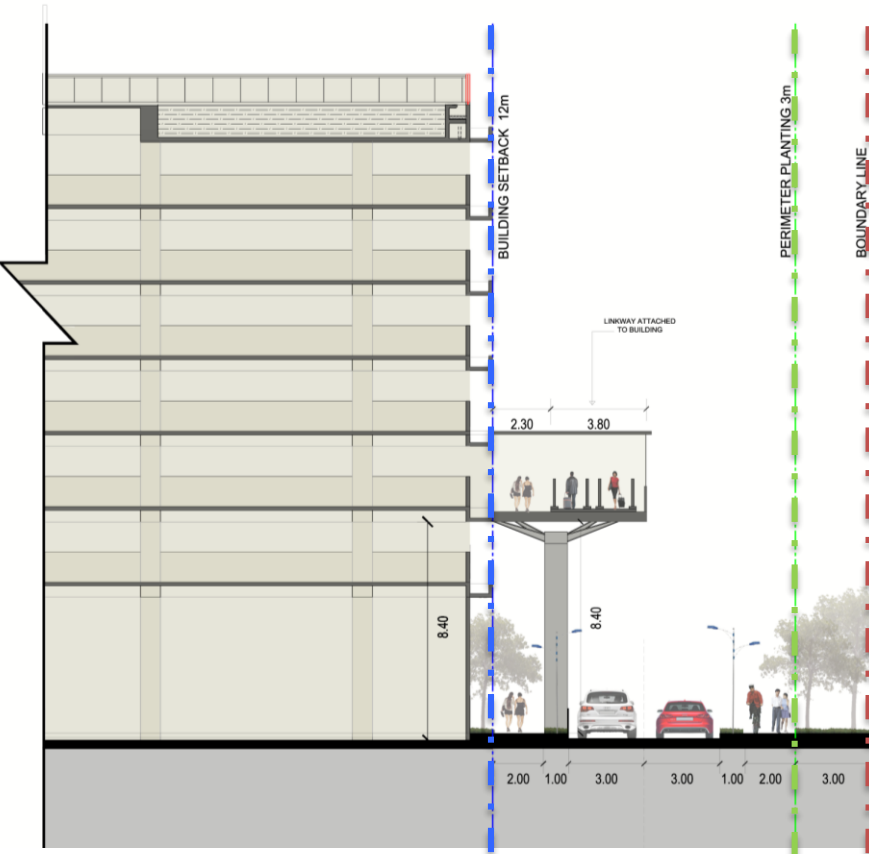




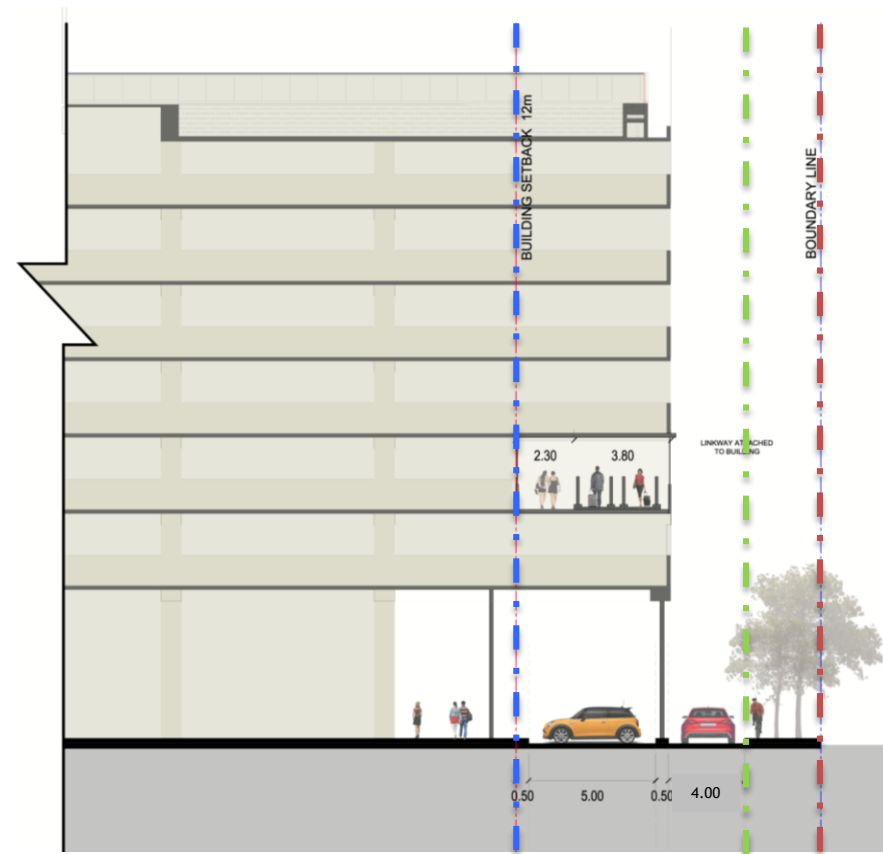
# Part 1 : Overall Guidelines

## DG 4 : Green & Connectivity

### Elevated Walkway & Travelator

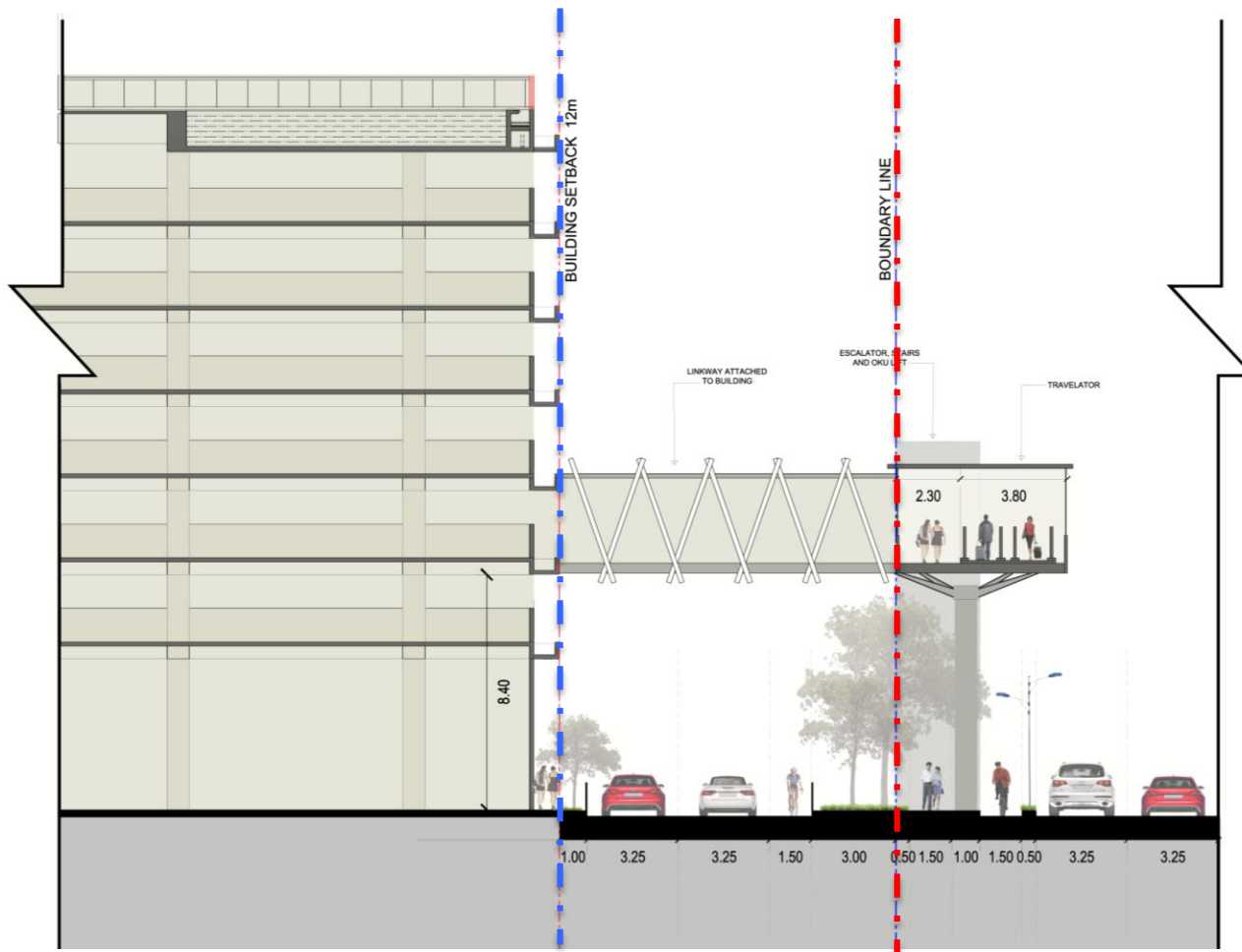


Option 1 : Pedestrian Linkway attached to the building

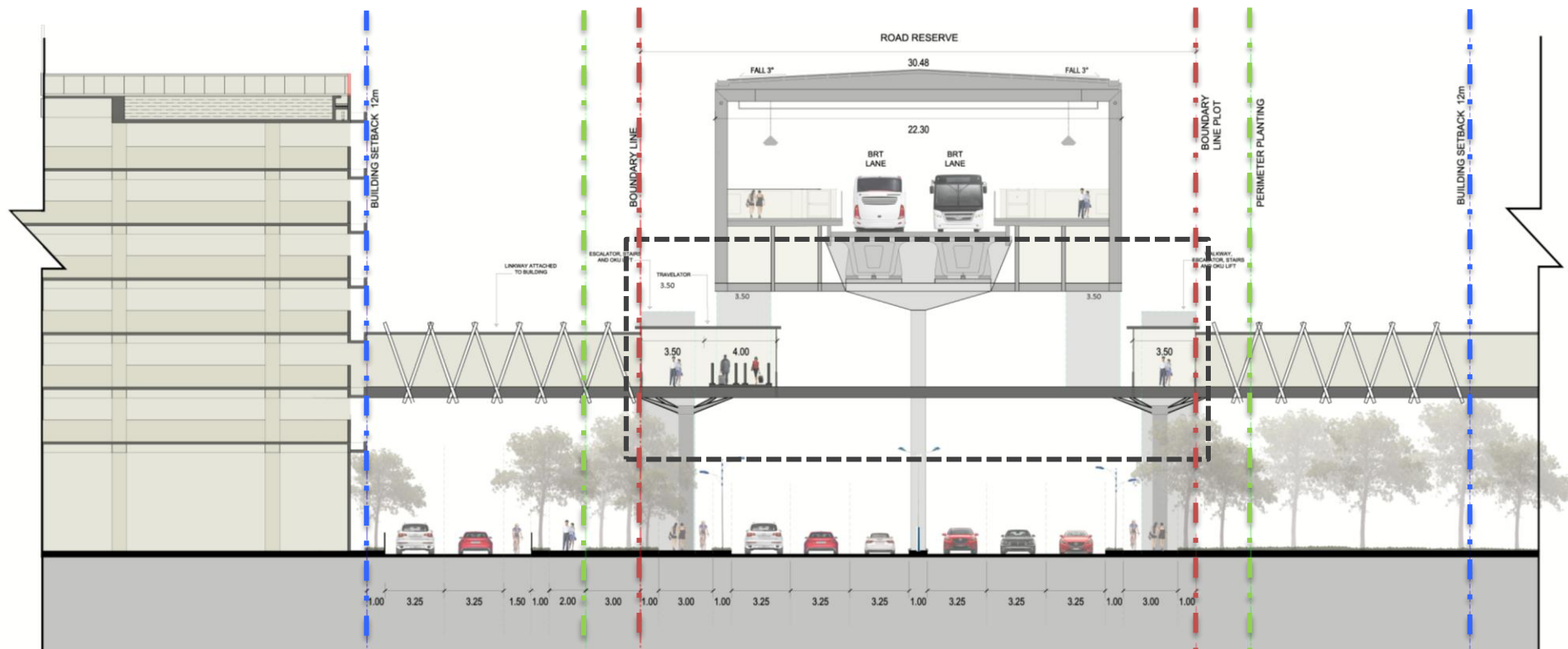


Option 2: Pedestrian Linkway attached inside the building





Option 3 : Pedestrian Linkway detached from the building



Option 4 : Pedestrian Bridge to KLM North BRT Stop



## PUBLIC FACILITIES INITIATIVES—Transit Bus + Feeder Bus



### Transit Bus Facility



### Propose Feeder Bus by SPAD

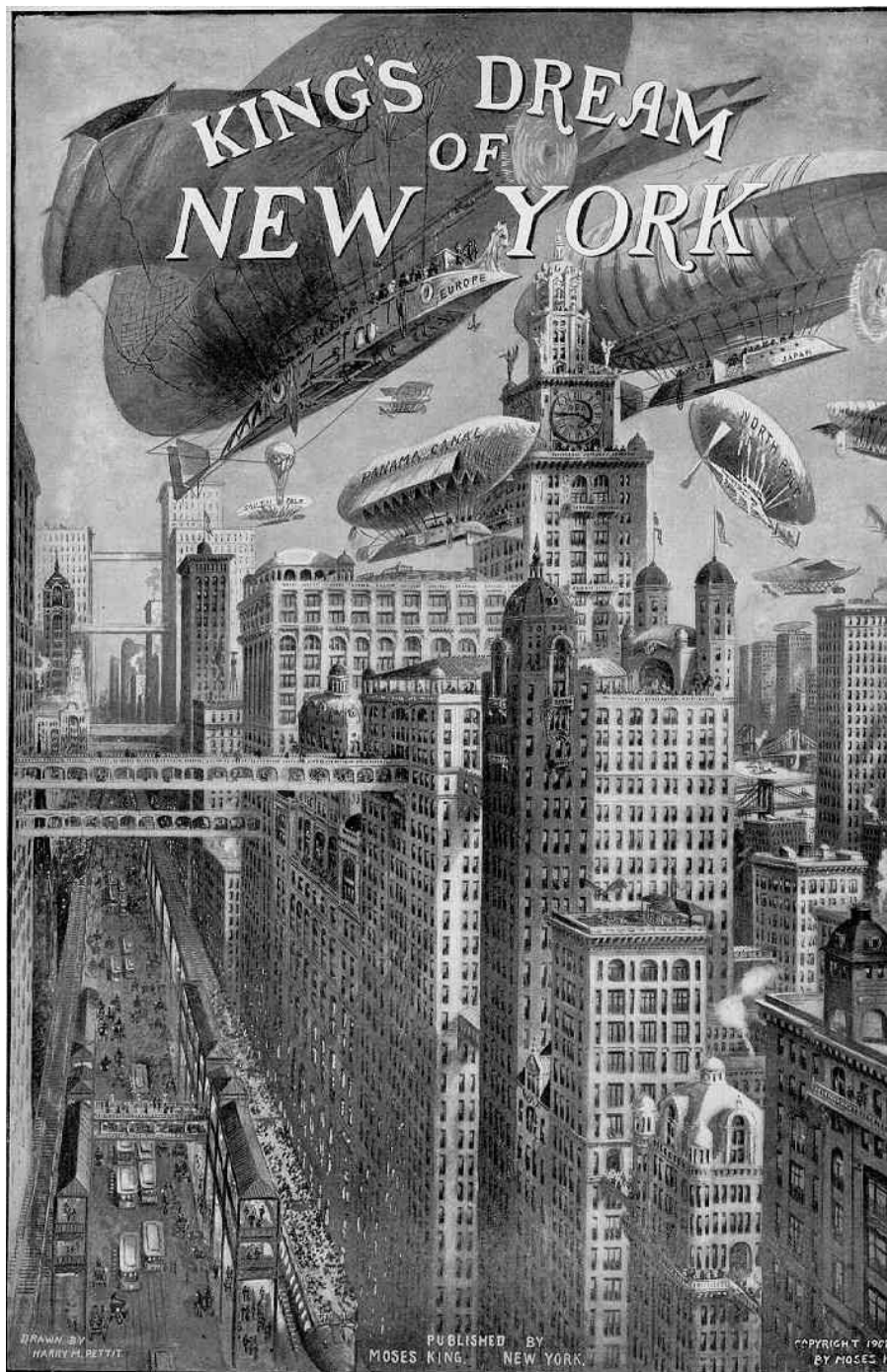
**• VERITAS •**

# THE STORY

## Chapter 4: Visions of the Future

*To imagine what our future cities will be, we must try to imagine how future public transportation technologies will evolve. One way to do this is to study visions of the future predicted by SCIENCE FICTION*



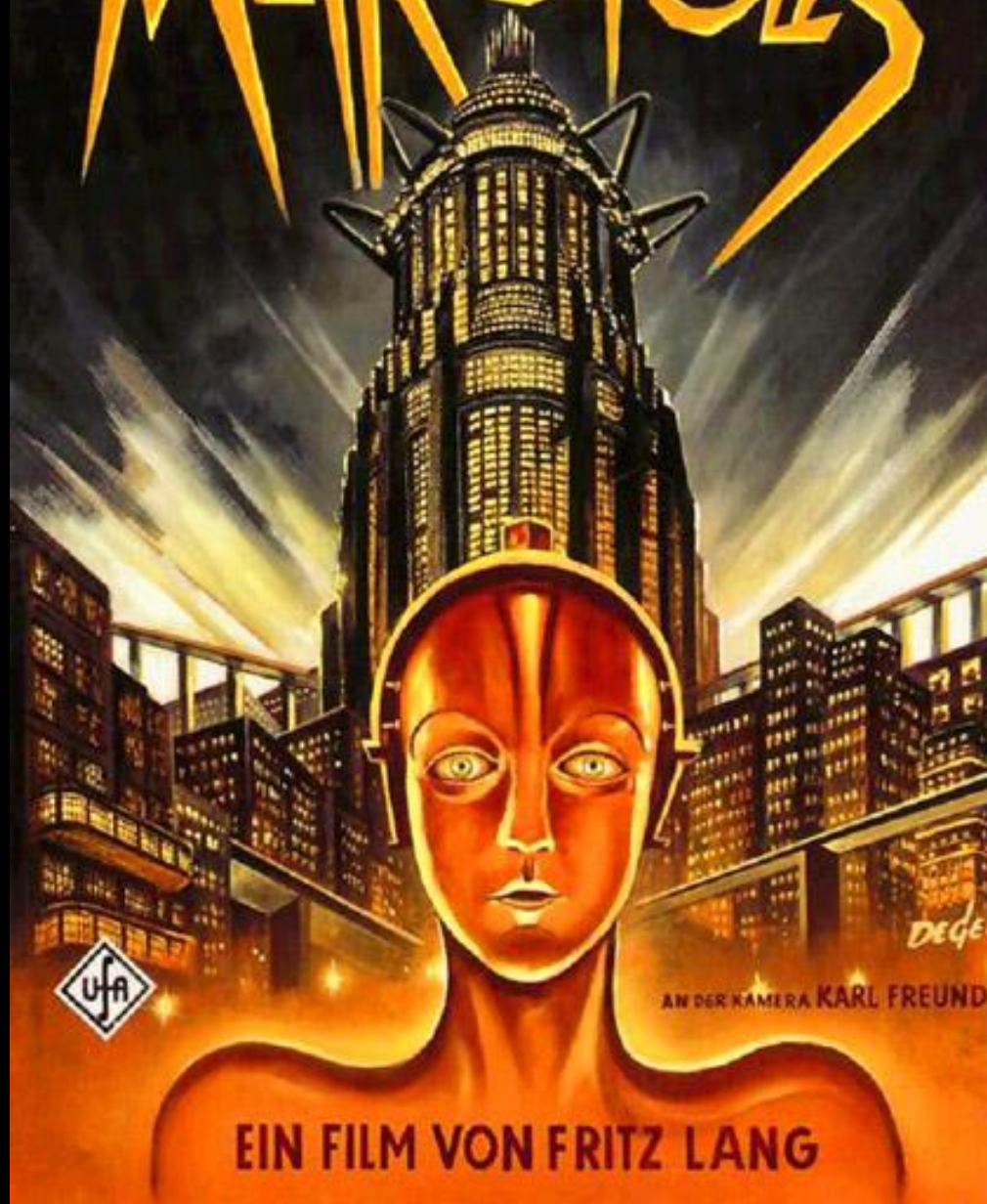


Moses King

Dreams of  
New York  
1890's



# METROPOLIS



AN DER KAMERA KARL FREUND

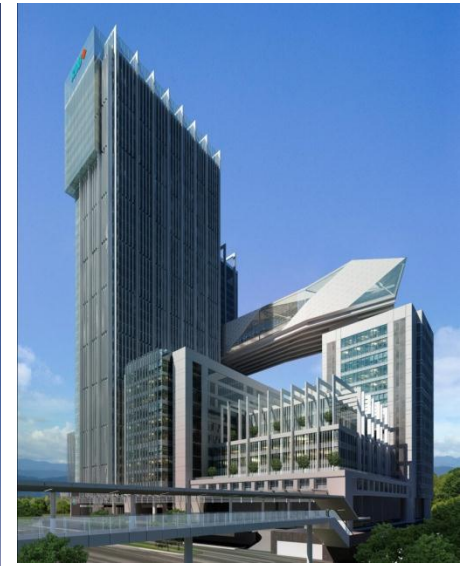
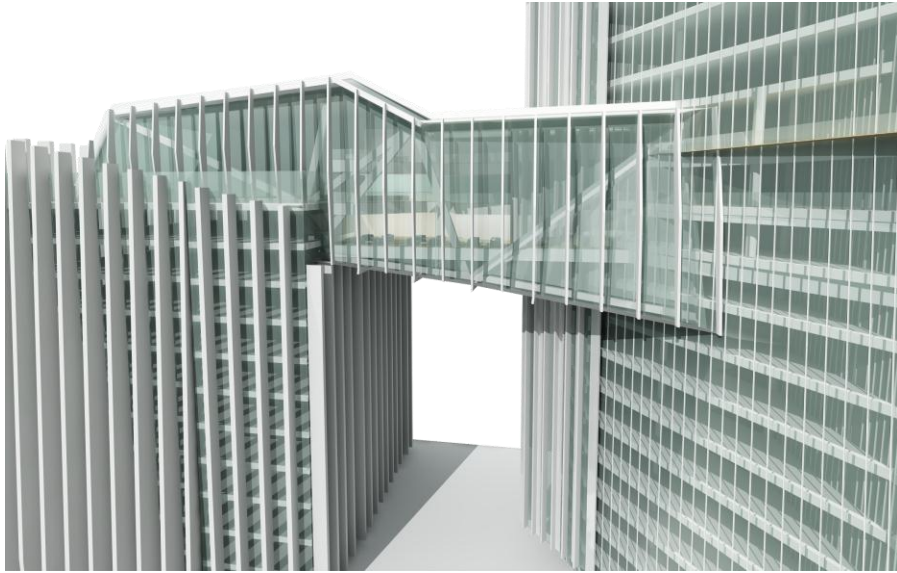
EIN FILM VON FRITZ LANG





Metropolis, 1929





Bridges in the Sky





Total Recall, 2012

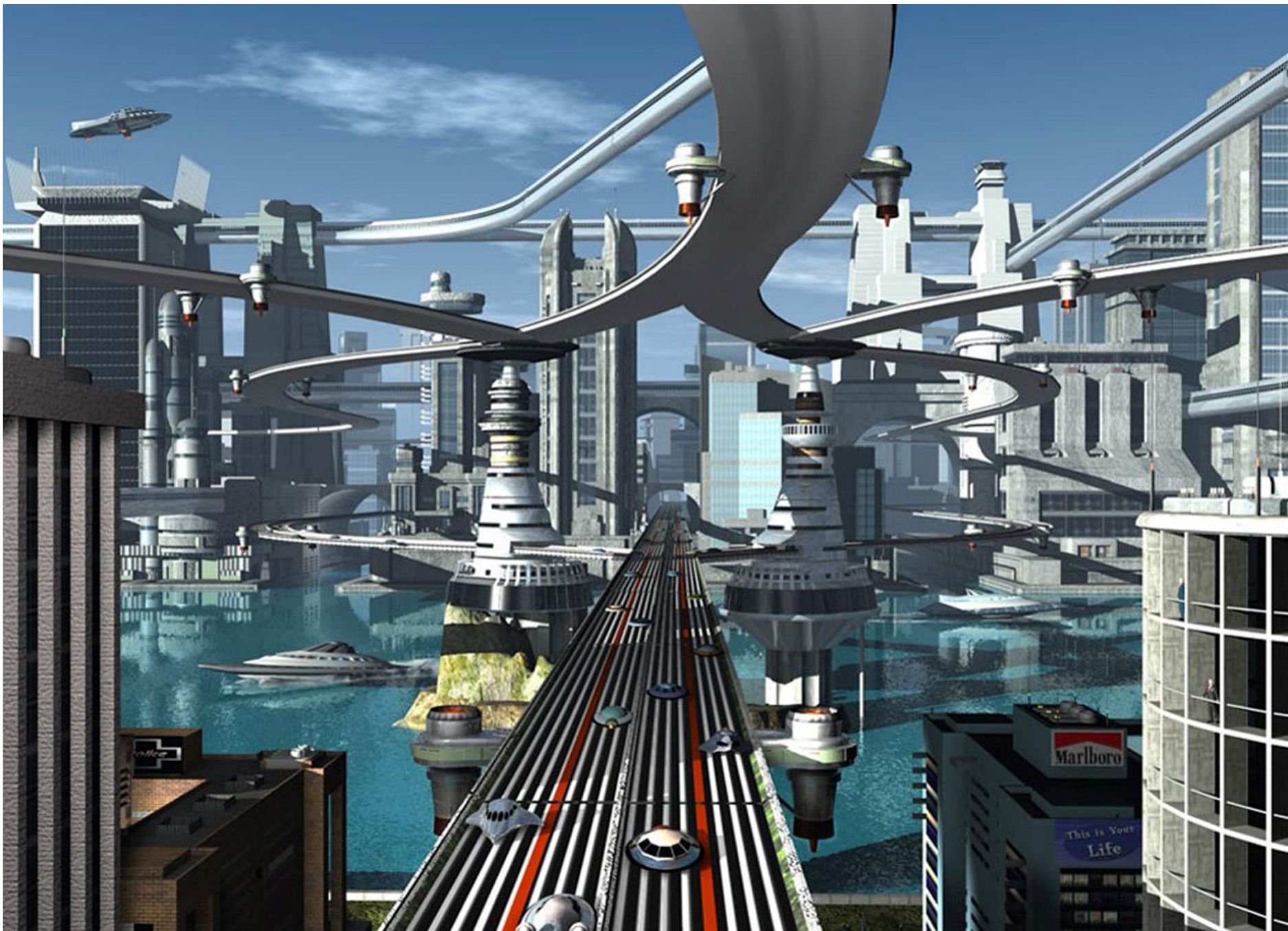




Total Recall, 2012











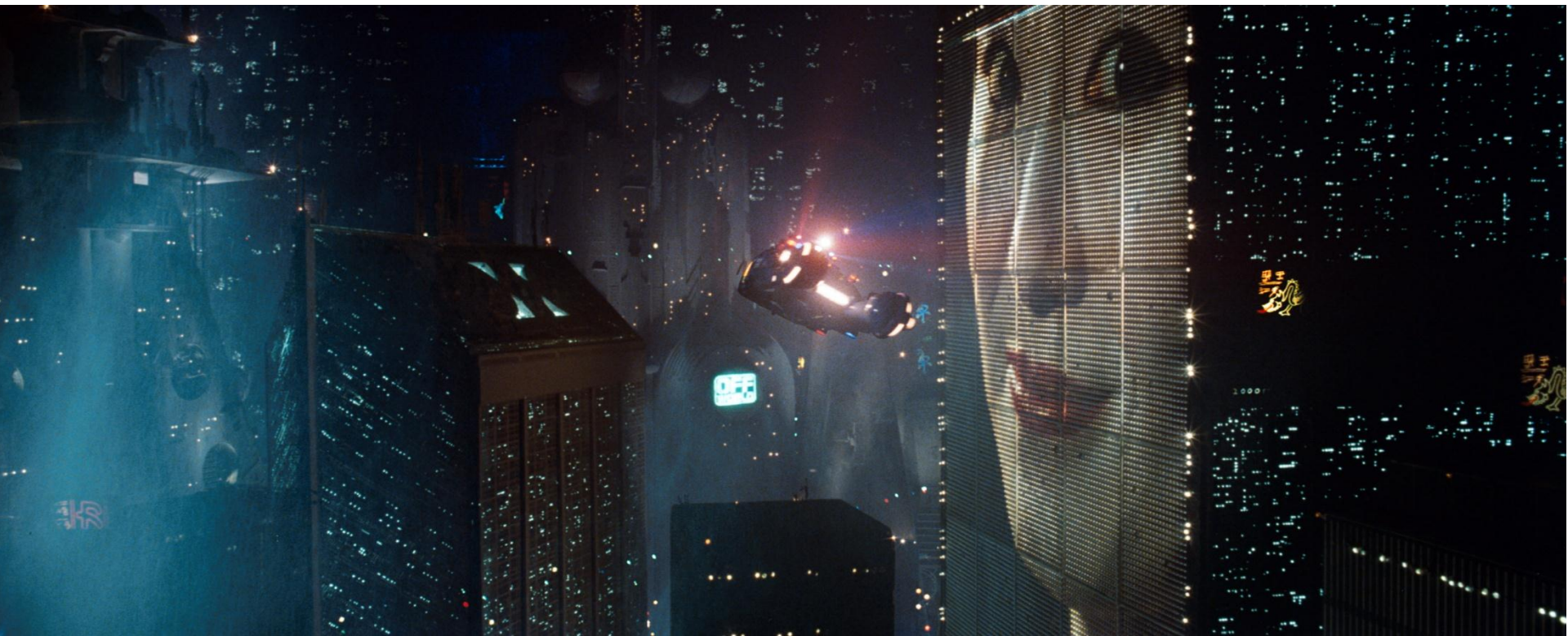












Blade Runner, 1982



# LAND PUBLIC TRANSPORTATION and the ***FUTURE ASIAN CITY*** (in 4 chapters)



by  
**David Mizan Hashim**

